



Portland Public Schools

# Ida B. Wells High School Modernization



Design Advisory Group Meeting #3  
August 14, 2024



DESIGN TEAM HERE TODAY



Donna Bezio  
PPS



Rolando Aquilizan  
PPS



Amelie Reynaud  
Bora



Becca Cavell  
Bora



Amy Running  
Bora



Julia Morris  
Bora



Kim Nichols  
Bora



Thy Daniels  
After Bruce



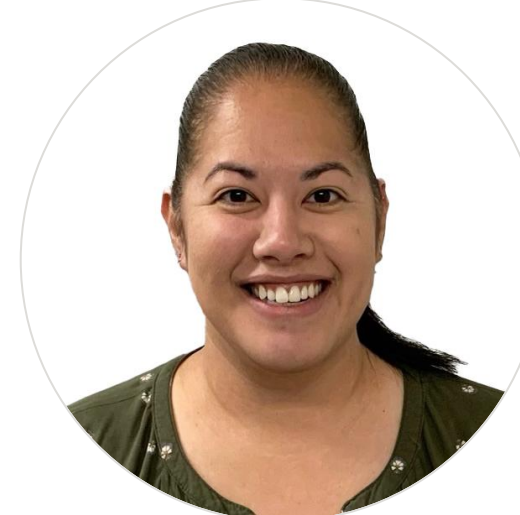
Ryan Fukuda  
After Bruce



Chelsea McCann  
Walker Macy



William Morales  
Walker Macy



Noelle Idehara  
Hoffman Construction

# AGENDA

**Introduction** 00:03

**Community Agreement Updates** 00:10

**Schedule Update** 00:02

**What We Heard DAG #2 (This!/Not That!)** 00:15

**Façade Development** 00:15

**Site Plan Updates** 00:15

—Feedback Break 00:15—

**Feedback Exercise** 00:20

**Report Out** 00:20

**Closing/Next Steps** 00:02

meeting notes from  
DAG #2 are posted  
on the PPS Bond  
website!



# Community Agreement Updates





## COMMUNITY AGREEMENTS

**1. We embrace student-first thinking.**



**2. We approach conversations with curiosity and question our assumptions, understanding that multiple solutions or approaches can exist at the same time and all be true.**



**3. We assume positive intent and respect one another through our words and actions.**



**4. We understand that we all can't get what we want.**

**5. We encourage a variety of voices in our process, and make space for different communication styles and preferences.**



## COMMUNITY AGREEMENTS

- 1. We embrace student-first thinking.**
- 2. We approach conversations with curiosity and question our assumptions, understanding that multiple solutions or approaches can exist at the same time and all be true.**
- 3. We assume positive intent and respect one another through our words and actions.**
- 4. We understand that we all can't get what we want.**
- 5. We encourage a variety of voices in our process, and make space for different communication styles and preferences.**



# Schedule Updates





PROJECT TIMELINE

2019  
Comprehensive  
Master Plan

2023-24  
Comprehensive  
Planning

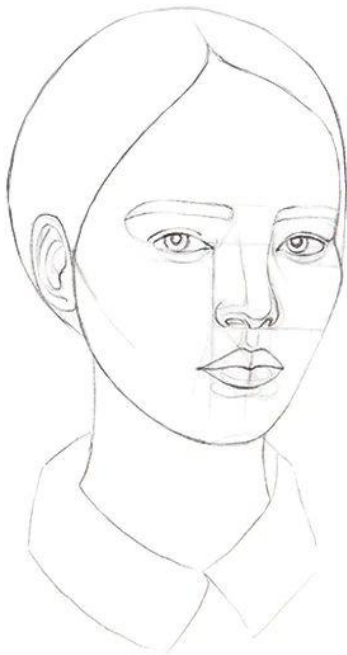
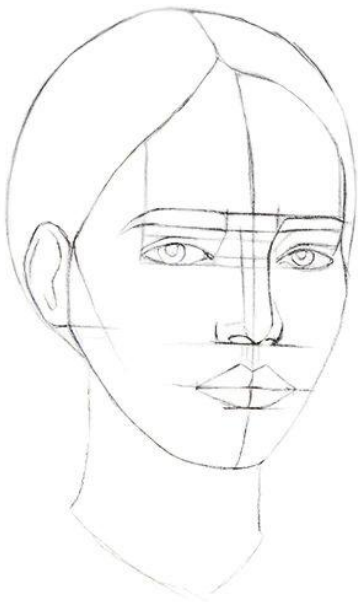
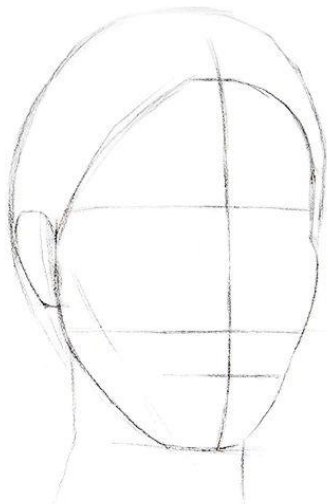
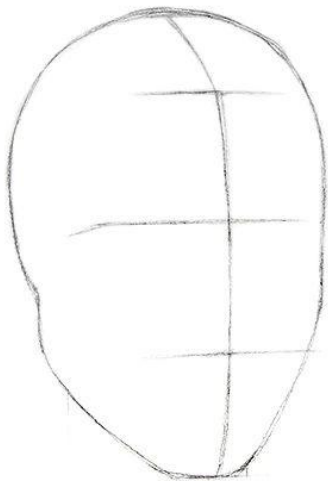
**Schematic  
Design**

Design  
Development

Permit  
Documents

Ready for  
Construction!

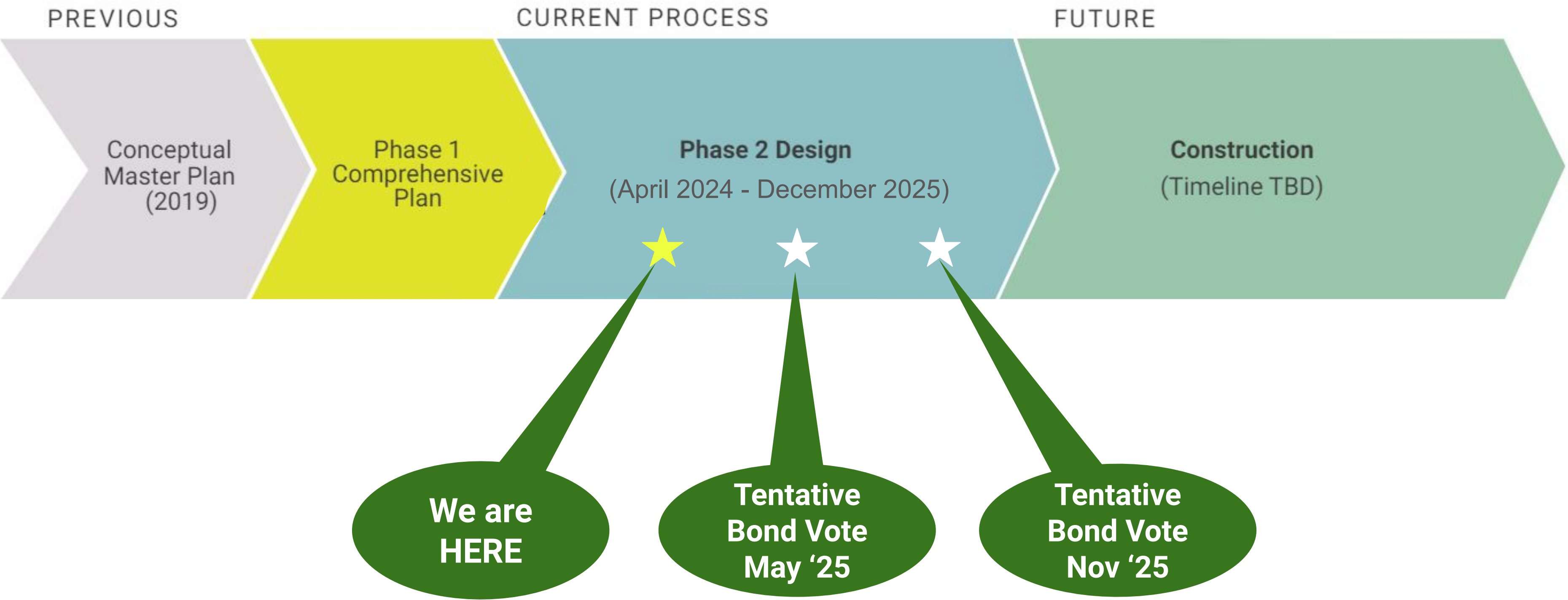
We are  
HERE



TYPICALLY  
18-24 MONTHS

TYPICALLY  
24-36 MONTHS

# PROJECT TIMELINE





What We Heard at  
DAG#2  
Results of This!/Not  
That!





# WHAT WE HEARD - THIS! / NOT THAT!

## THIS!

Place a **green** dot on any image that reflects the project vision,

Feels right for this location,

Represents Ida B. Wells High School,

Feels like an exciting place to go to school

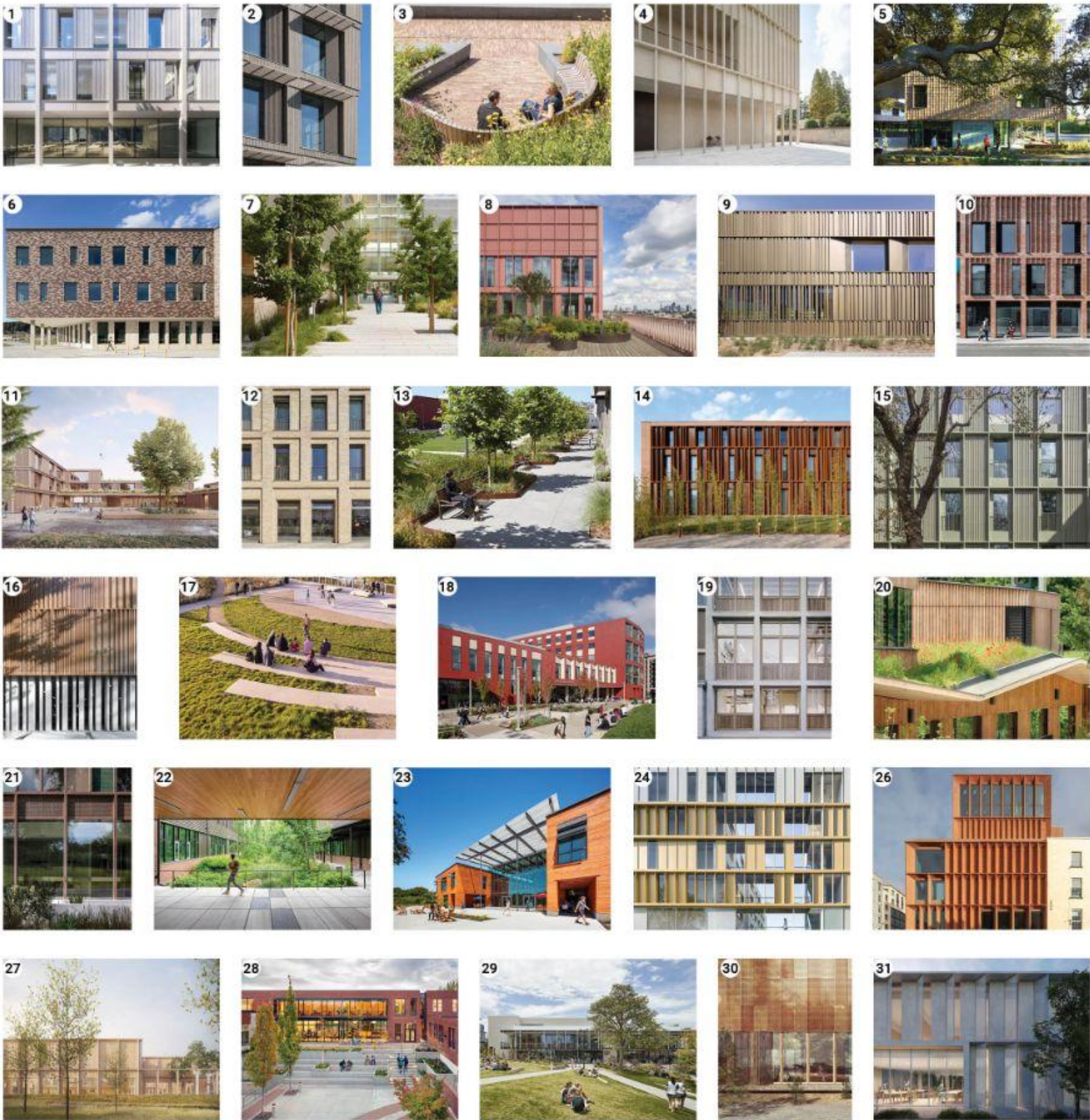
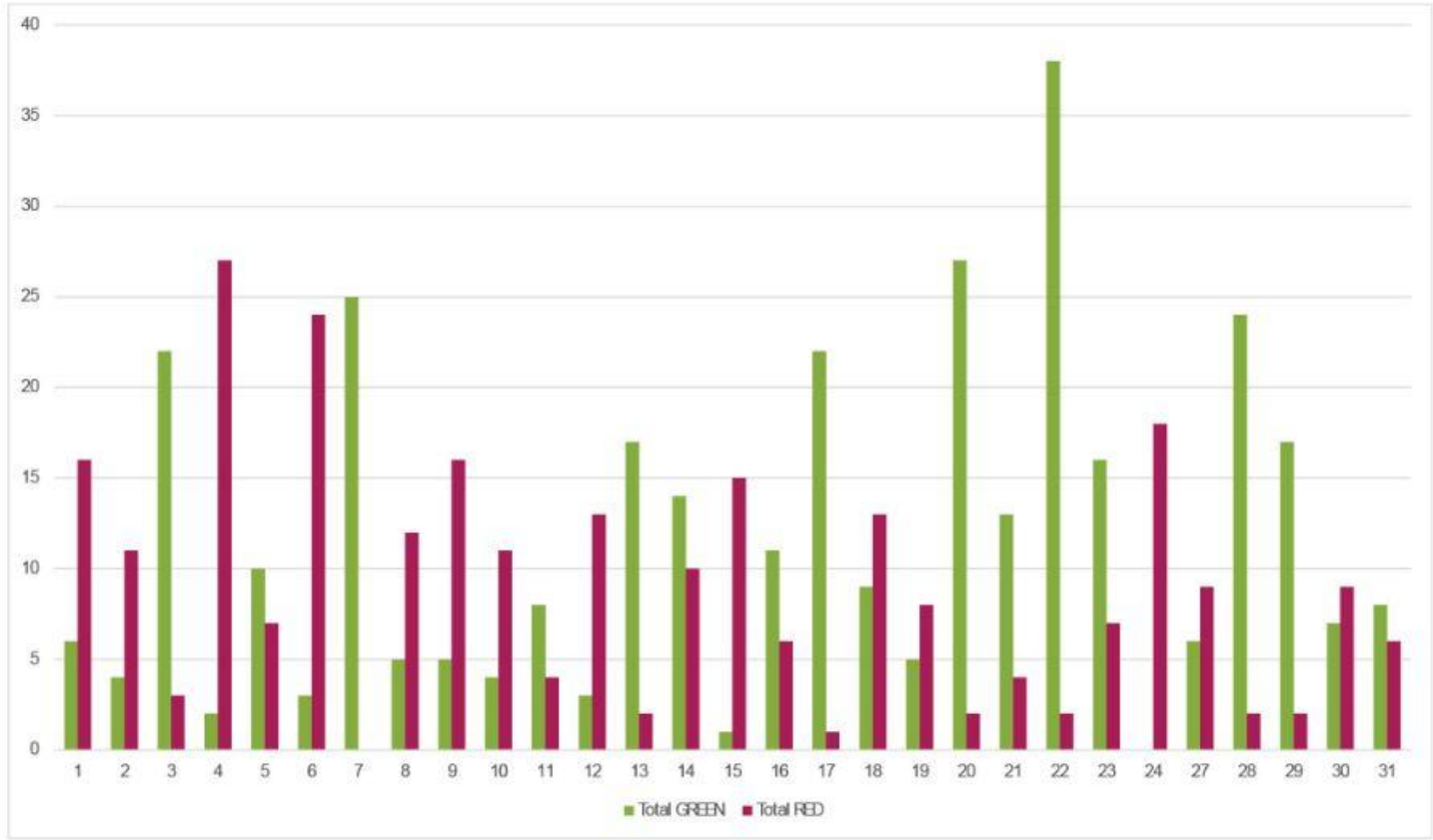
## NOT THAT!

Place a **red** dot on any image that does not reflect the project vision,

Does not feel right for this location,

Does not represent Ida B. Wells High School,

Does not feel like an exciting place to go to school





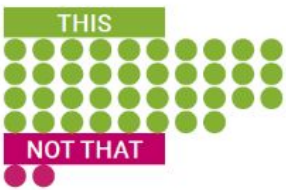
# WHAT WE HEARD - THIS! / NOT THAT!

IDA B. WELLS HS MODERNIZATION  
DESIGN ADVISORY GROUP MEETING #2

## Feedback Exercise - Results

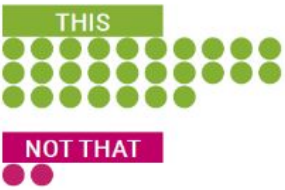
### GREEN DOT / RED DOT

- Participants were asked to put a green dot on any image that represents the project vision and a red dot on any project that does not represent the image. Specific comments were also gathered.
- This was done as both a collective exercise and as an individual exercise.
- After the DAG a google form was sent out to allow members to participate in the exercise who were not present.



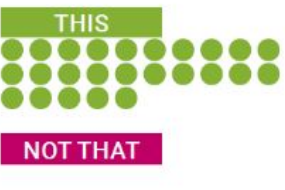
### COMMENTS:

- This makes me hopeful for covered walkways that will encourage exterior movement while allowing students to stay dry.
- I really appreciate the covered outdoor space connecting corridors or buildings. Fresh air but safe from the elements.
- Love the wood ceiling & the courtyard feel with the plants!
- Love the greenery in the middle. LOVE the wood ceiling. Great feeling of being in nature.
- Nice outdoor pathway, vegetation.
- Is a dream - let's do this. A school that looks like a retreat.
- Love the thoughts on being able to walk between buildings under cover & getting fresh air + being outside. Especially with all the rain we get.
- Covered walkways work! Encourages more outdoor activity. People won't have to rush. Can walk more leisurely. Can also be used to frame / enhance view of architectural details.
- LOVE the idea of nature entering the built space.
- The inclusion of green space in the design on and within the building is good.
- Much needed views to nature, environmental & psychological benefit as well as educational opportunities.
- There is nowhere to sit! Schools are hangout places for the students.
- The landscaping appears to be just for show. Inaccessible. It all looks so severe.
- Beautiful courtyard
- I like the covered walkways between parts of the building that are still open to the outside so it doesn't feel closed off - good to give students access to at least a little of the outdoors on their way between classes. I like the wood roofing and the little bit of variation in concrete coloring.
- Great for the classroom windows to face the central green space!
- Best exterior.



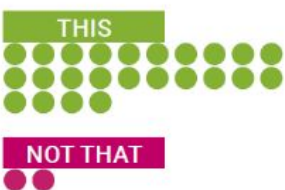
### COMMENTS:

- Feels like a great way to bring nature to higher floors.
- Love the nod to a butterfly roof and the living roof.
- Yay roof garden / green roof. All / any green, native plants, more trees.
- I like the living roof concept & would be interested to see this explored more.
- Love the look of natural wood / materials but also worry about how easy they are to clean off - graffiti.
- Landscape is integrated into the building environment.
- Upper floors see green & not roofs on rocks.
- The wood is beautiful, fits the community & very inspiring. Looks like a place where people want to be - students, teachers, parents, etc.
- Meh, the architecture feels a little trendy and will look dated.
- Love the green roof!
- Feels run-down, dilapidated.
- Love the integration of green roof and topographical profiles in architecture. Integrates landscape and building design.
- Wood siding and integrating with the landscape is in keeping with the green hillsides of SW.
- I love this! Very PNW- wood siding and living roof top.
- Looks unstructured and complicated.
- Integrated into the environment. Visually interesting/intriguing, "cool"



### COMMENTS:

- LOVE the juxtaposition of multi-mode surface and grass, trying to maintain functionality and maximize green space.
- All walkways should have depth, scale, greenery and low maintenance ground covers. Breaking up pathways with plantings on irregular edges reduces scale and institutional feeling. Makes it interesting to walk though (See also #13)
- Good flow.
- Trees flanking major routes and facade adjacencies matching rhythm of building verticals are great.
- a tree-lined entry is nice but there are no benches!
- Appreciate the trees and the natural landscape entrance.
- Glass and green plants make it inviting.
- Trees, greenery, variation, windows.



### COMMENTS:

- I like the mixture of the function of stairs with the amphitheater seating along the grade.
- Love courtyard aspect, but too much concrete. Maybe trees / native plants in the center area. Steps / seating are awesome.
- Love all the windows. Love the stairs + seating - could use more green / trees mixed in.
- Great courtyard, needs less concrete.
- Courtyard is great, transparency of the central volume is great. Brick is too heavy on right wing.
- Open, but provides space for people to connect.
- I like it because of the open \_\_\_\_ + terraces and the trees, but the concrete feels very unwelcoming.
- Leverage the grade to provide outdoor sitting areas. How about a mini amphitheater? (For small musical performances, speeches, debates, rallies, etc.)
- Grand entrance, open / inviting.
- A large unifying element at entrance as a seating feature and gathering space would create a strong sense of arrival.
- Almost, but there's no covered hangout space. It RAINS in Portland! There should be a stage or focal point to the amphitheater.
- Wonderful courtyard for students to be outside together. Plenty of seating.
- Open, inviting, lots of light.
- I like the spaces for students to sit/eat/gather/study while still being "in" the school - inviting them to stay on campus rather than leaving. I like the open courtyard in the middle of the school that classrooms and library windows can look out on.



# WHAT WE HEARD - THIS! / NOT THAT!

THIS!

## **Connect with Nature.**

The highest number of “green dots” and most positive comments revolved around designs that connect the building to the surrounding nature, feature views of nature, and provide students with places to sit/gather either outdoors or near large windows.

Other features like visible green roofs, natural materials (wood), and natural landscaping were all favored.





# WHAT WE HEARD - THIS! / NOT THAT!

THIS!

## **Occupiable Outdoor Space.**

Large covered outdoor spaces, pathways filled with seating alcoves, covered walkways, and active courtyard spaces felt welcoming and flexible.

Many comments highlighted the importance of covered outdoor space in our rainy climate.





# WHAT WE HEARD - THIS! / NOT THAT!

THIS!

## **Warmth and Texture.**

In façade aesthetics, organic, natural, and warm aesthetics were generally favored. Some favored brighter colors and some felt bright colors would be out of place in the neighborhood.

Façades with texture and multiple scales of façade elements were favored over those with a more monotone approach.





# WHAT WE HEARD - THIS! / NOT THAT!

THIS!

## Prominent Windows.

Designs that feature large windows that feel transparent and connect the school more to the community are favored over those that have smaller windows or ones where the windows are covered with shading devices or are otherwise disguised.

More transparency was associated with a more welcoming atmosphere.





# WHAT WE HEARD - THIS! / NOT THAT!

## NOT THAT!

### **Heavy and Cold Materials.**

Brick and Metallic façades were the most disliked exterior materials. Façades that are obviously metal paneled and those that are very stark in the color or application were generally disliked.



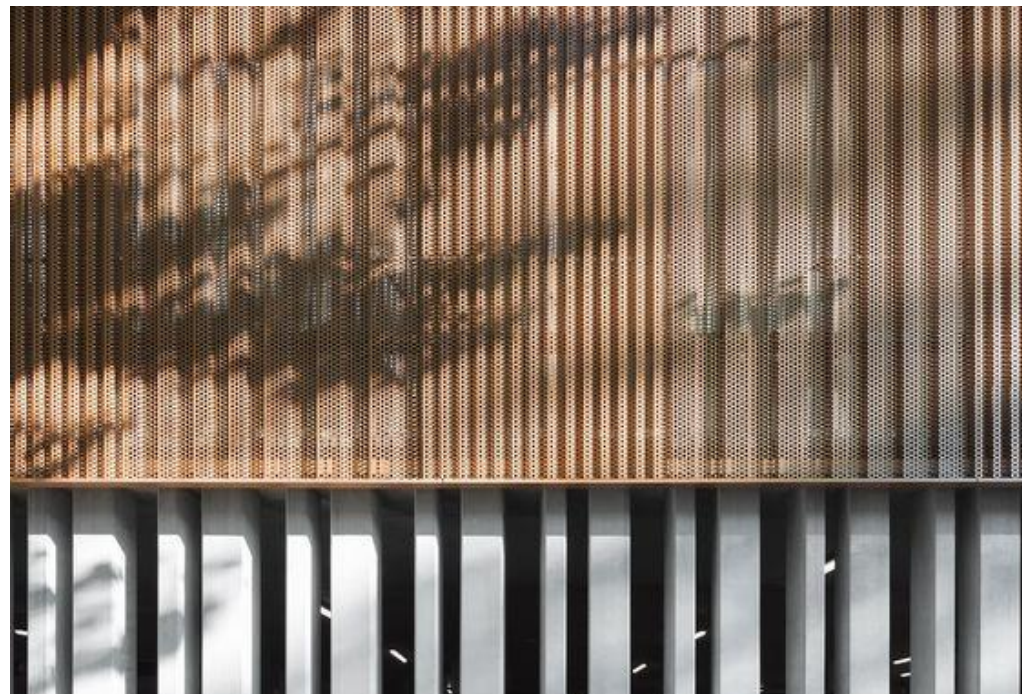


# WHAT WE HEARD - THIS! / NOT THAT!

## NOT THAT!

### **Not Feeling like a School.**

Some façades were criticized for feeling too residential, too institutional, or too much like an office building. Some design elements that seem to trigger these comments: cool or starkly light colors, grey, larger scale vertical elements with a regular application.





# WHAT WE HEARD - THIS! / NOT THAT!

## **Maintenance.**

Concerns are raised about designs that appear too difficult to maintain, don't seem durable, or would look or feel run down over time..

## **Inclusivity and Usability.**

Issues related to accessibility, visibility, and usability were noted. Spaces/shapes that felt exclusive rather than inclusive, spaces that aren't practical or easy to navigate for all users were brought up as concerns.



# Other Takeaways?



<https://forms.gle/UMUBPaQumEMZQ4pT8>



# Façade Studies





## PROJECT VISION



The new Ida B. Wells High School will embody the legacy of its namesake, shining a light on her commitment to truth, transparency, and justice.

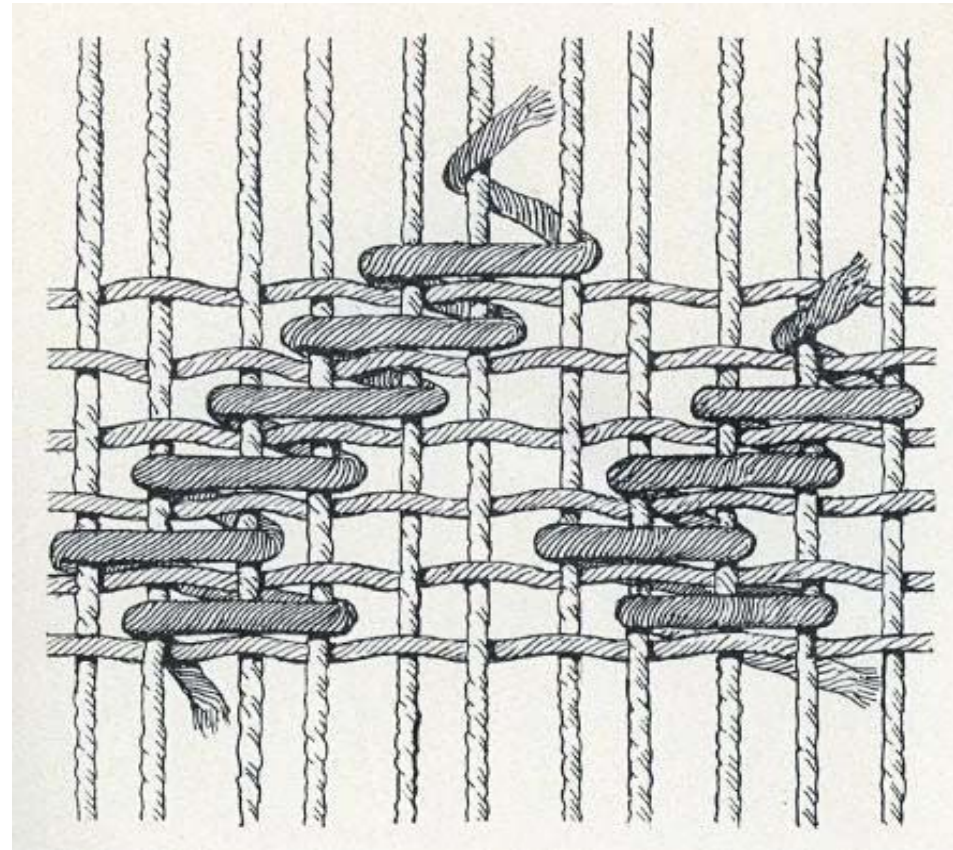
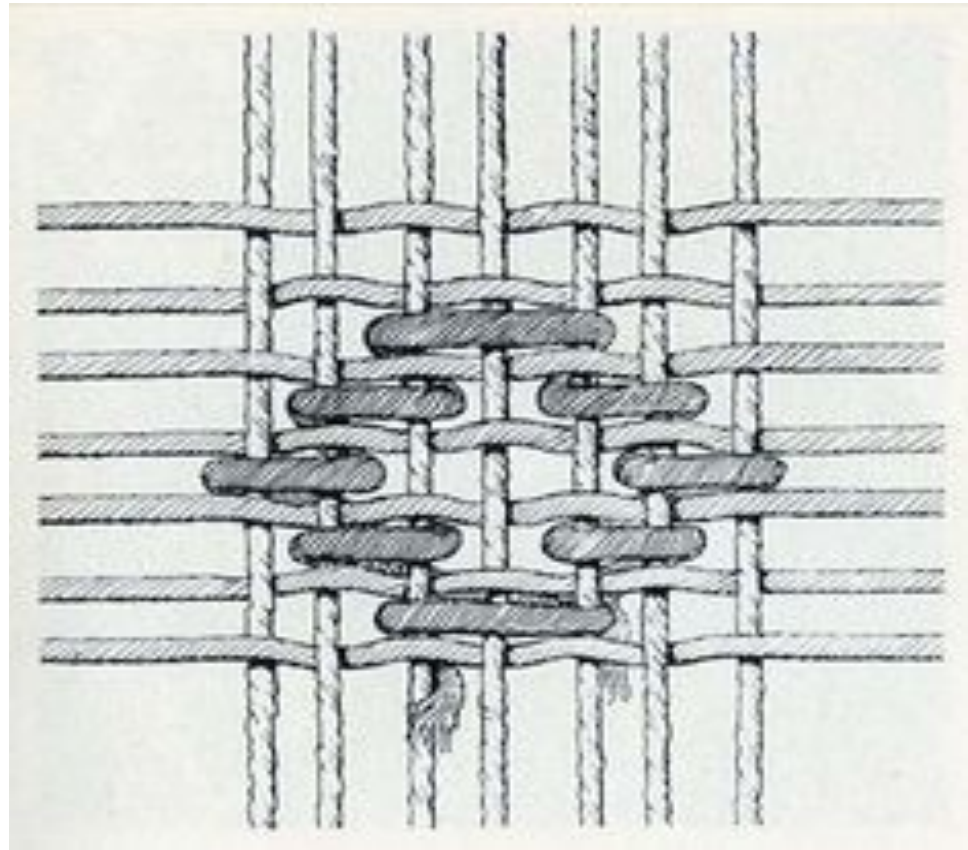




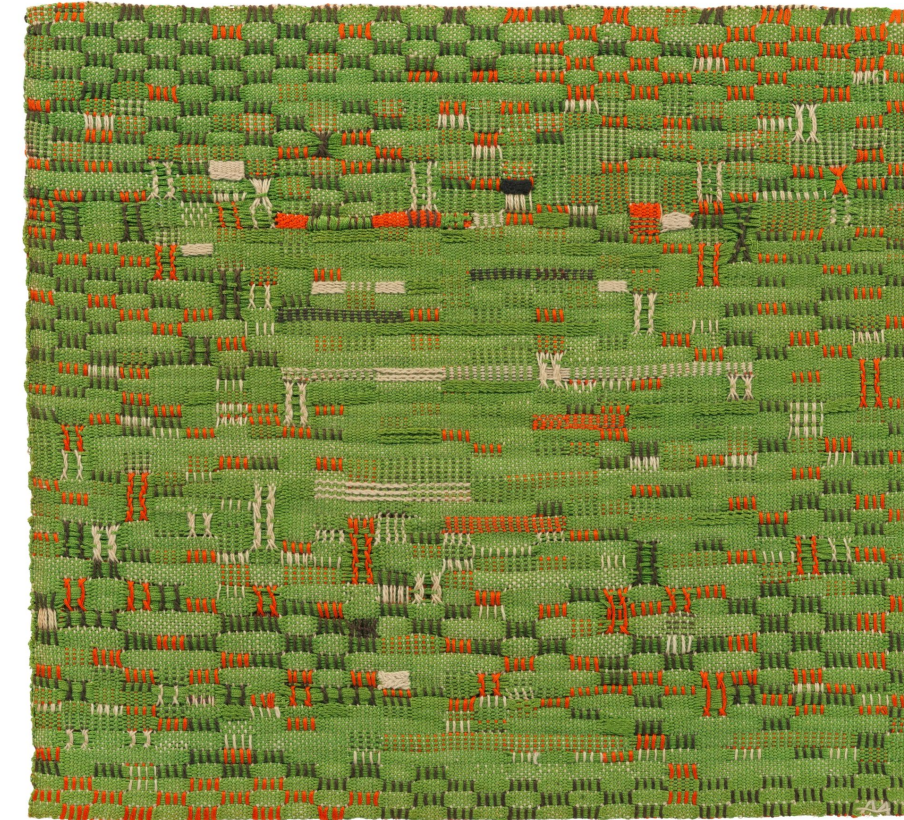
**Illuminating  
Expansive  
Multifaceted  
Visionary  
Centering**



# DESIGN CONCEPT



***Tapestry:*** a woven fabric of diverse threads and colors, creating a rich and intricate whole



Weave Inspiration



## FAÇADE CONSIDERATIONS

Project Vision & Design Concept

Daylight and Views

Sun Exposure

Surrounding Buildings

Natural Surroundings

Material Durability, Maintenance, and Sustainability

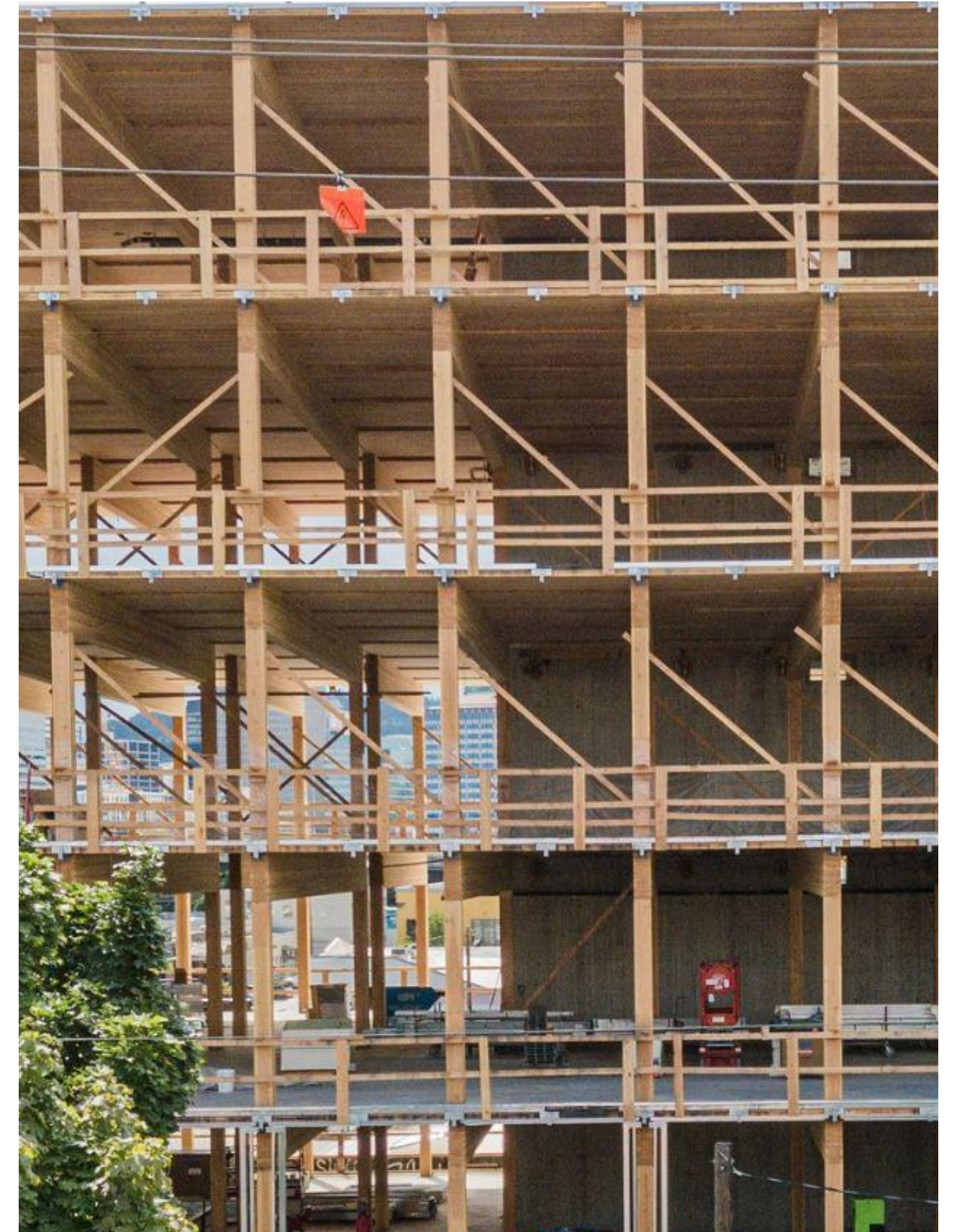
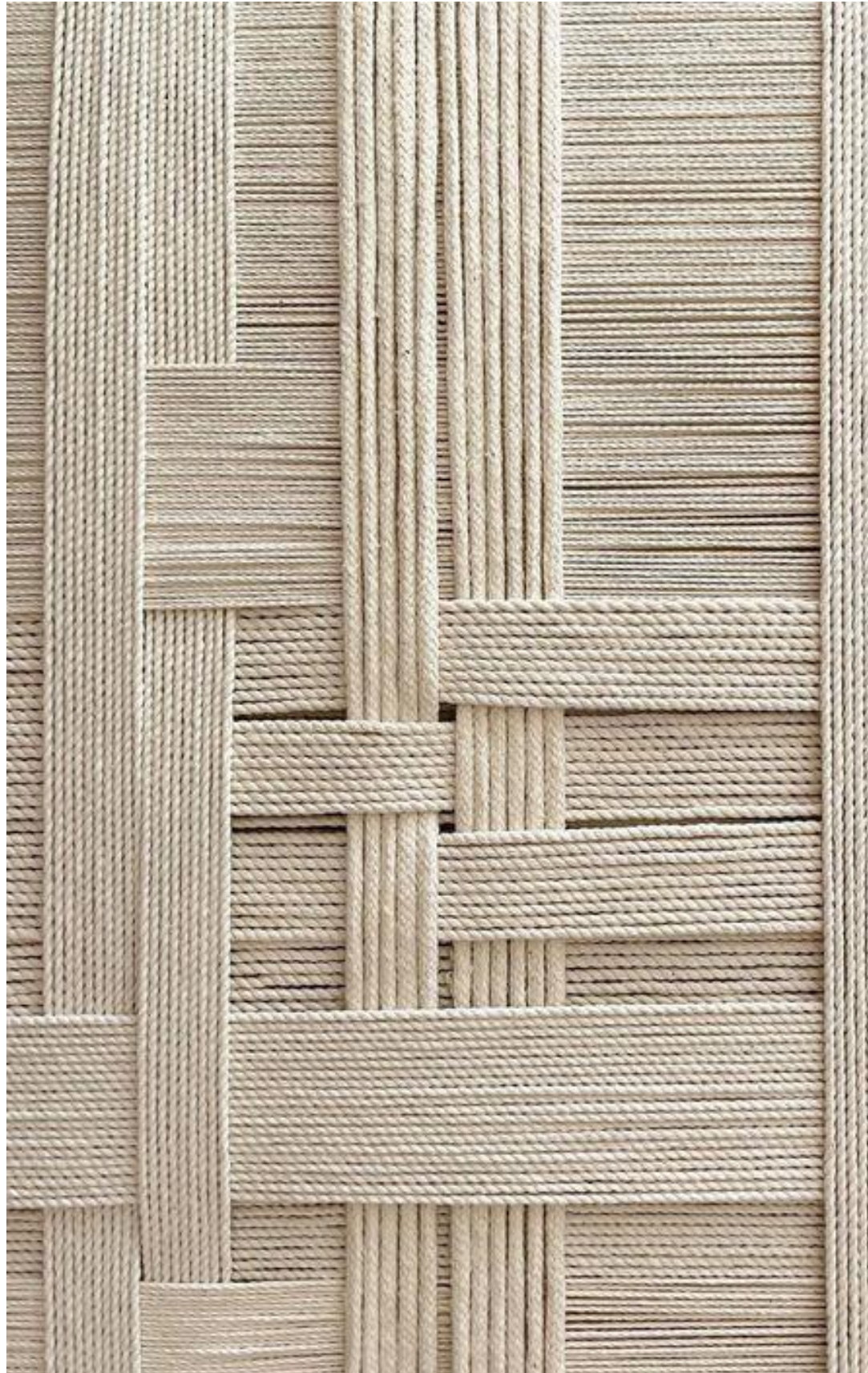
Material Costs

DAG Meeting #3 Feedback

Community Input

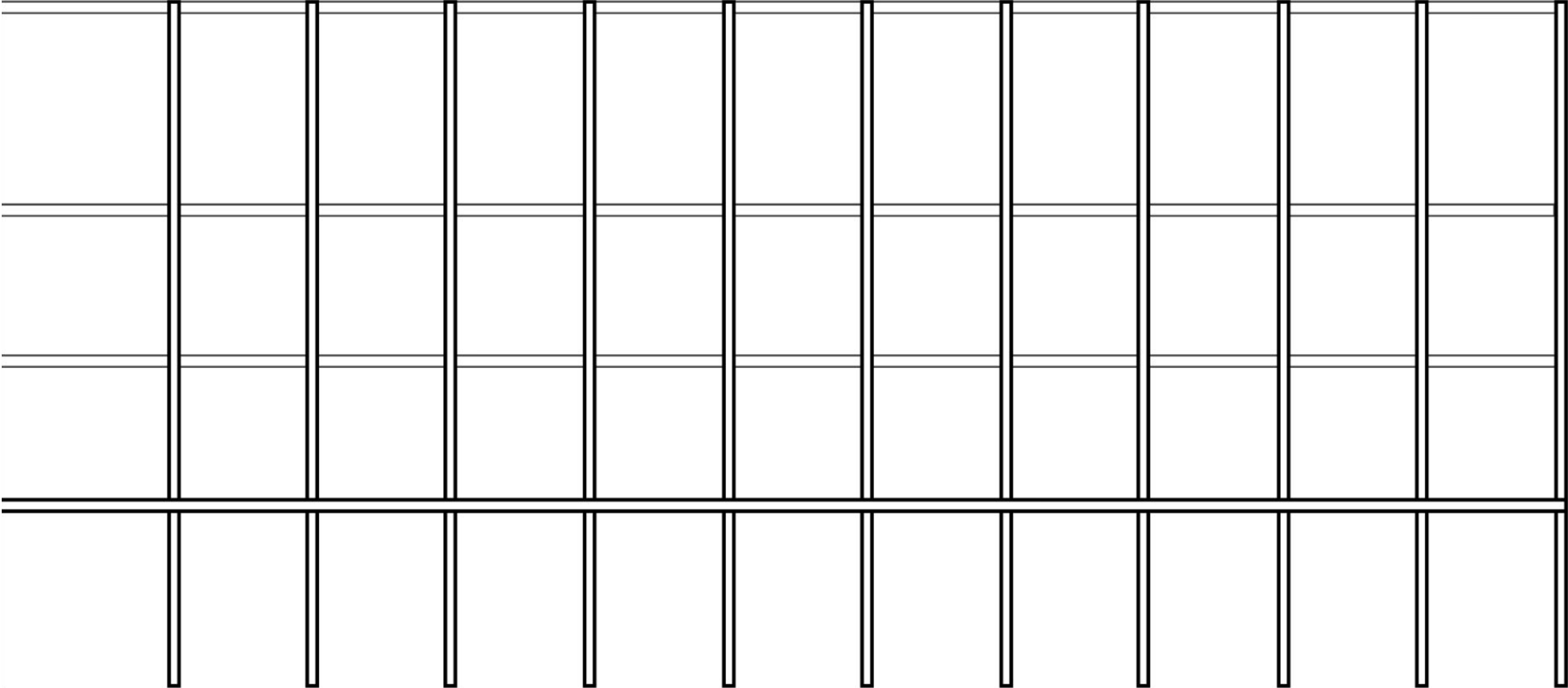


# FAÇADE INSPIRATION



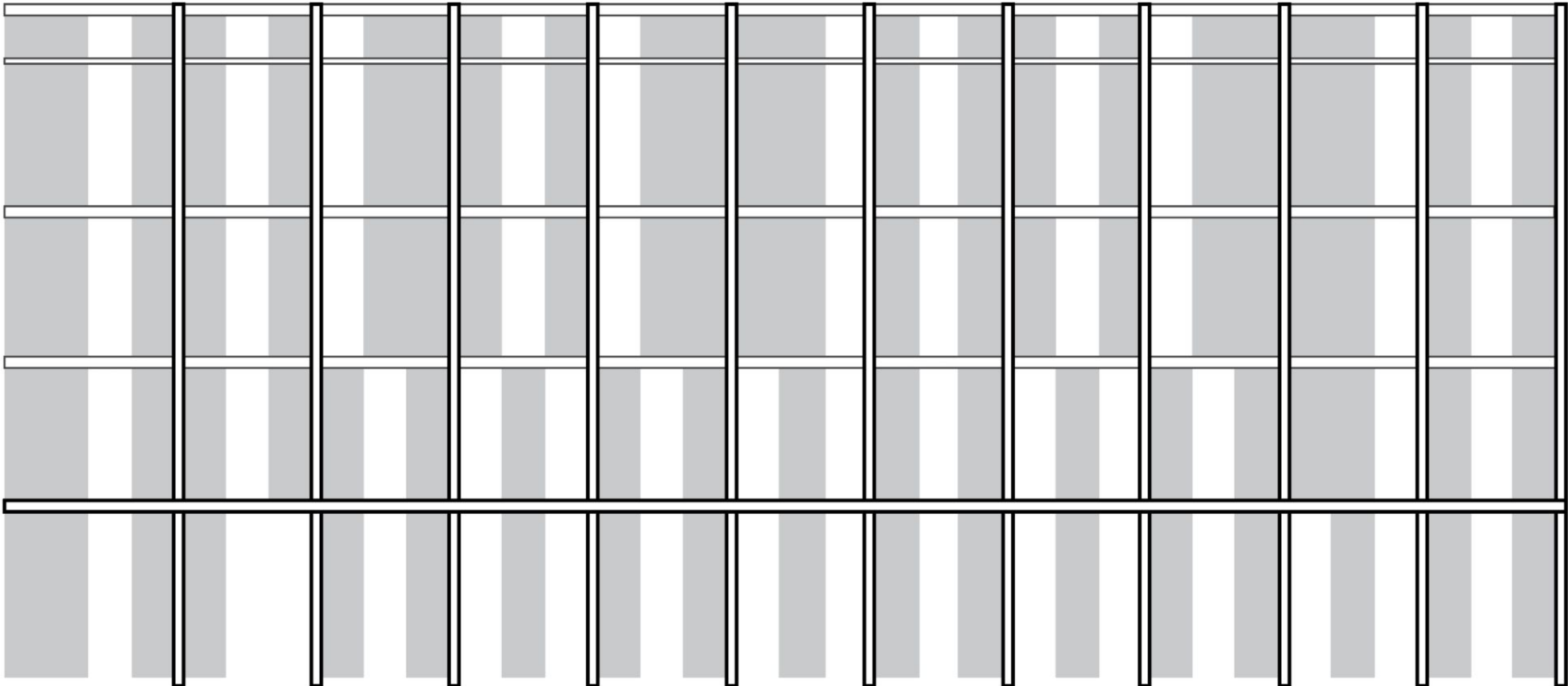


FAÇADE STUDIES



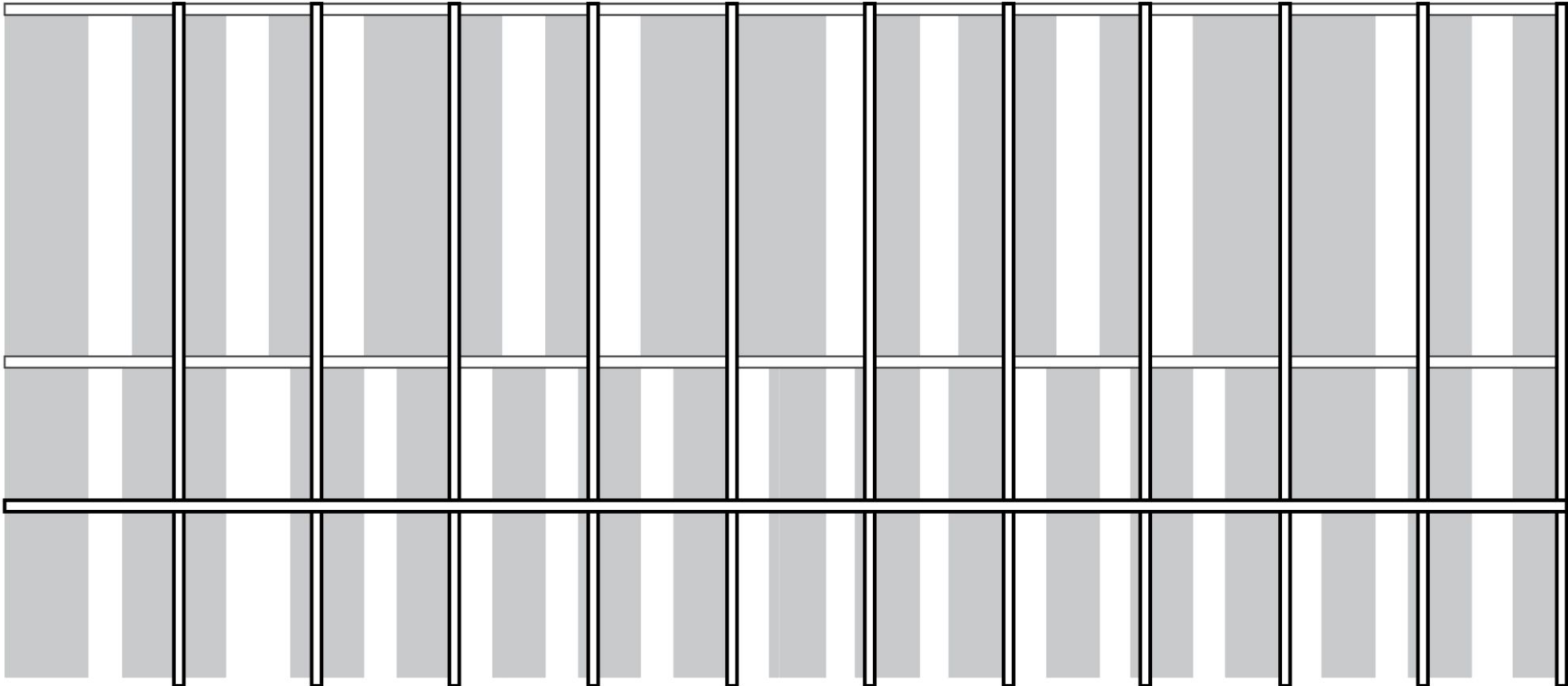


FAÇADE ELEVATION STUDY #1



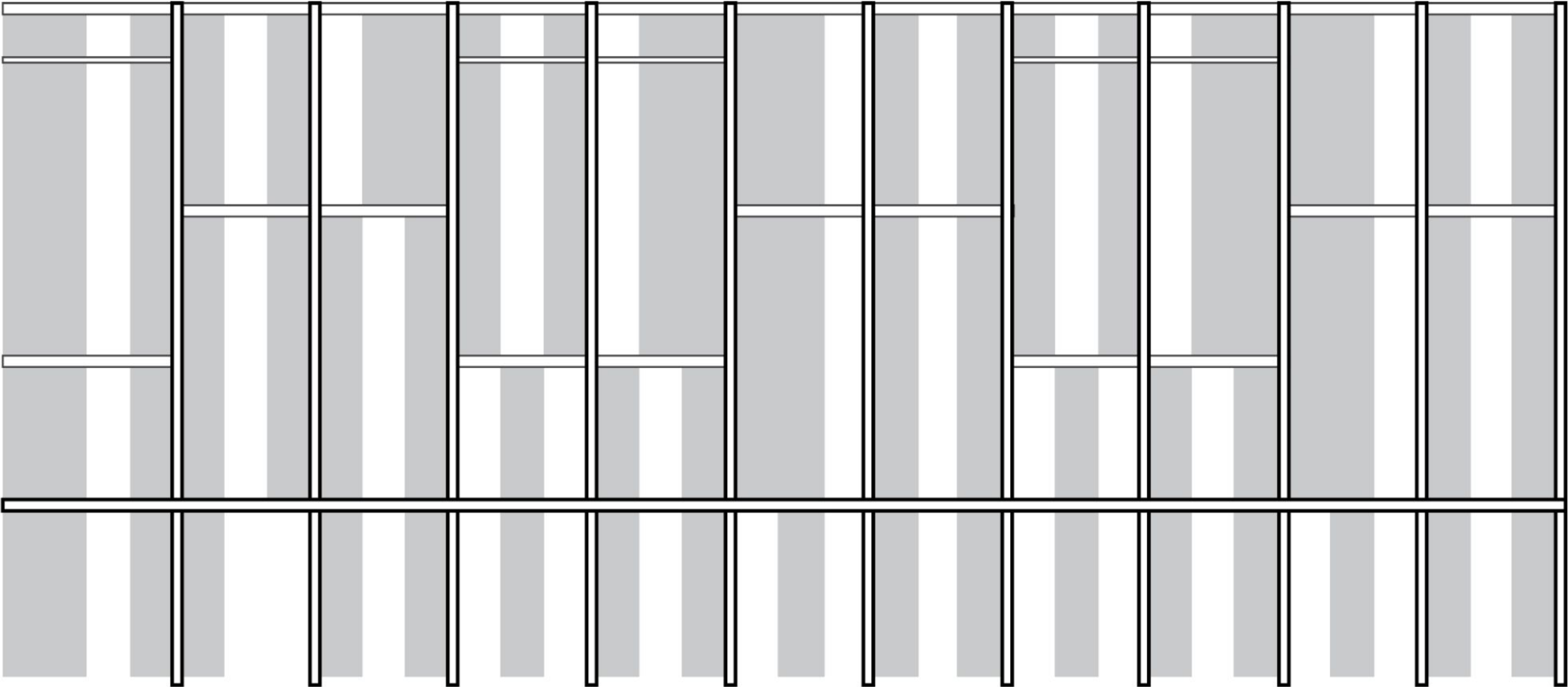


FAÇADE ELEVATION STUDY #2





FAÇADE ELEVATION STUDY #3





## FAÇADE ELEVATION STUDY #1





## FAÇADE ELEVATION STUDY #2





## FAÇADE ELEVATION STUDY #3





## FAÇADE - MATERIAL AND COLOR





FAÇADE - COLOR STUDIES





# FAÇADE - MATERIAL EXPLORATION



Metal

Cementitious Panel

Brick

Cost	TBD	TBD	TBD
Durability	MEDIUM	HIGH	HIGH
Maintenance	LOW	LOW	LOW
Lightweight	YES	YES	NO
Embodied Carbon	LOW	MEDIUM	HIGH
Supports Design Concept	YES	YES	MORE DIFFICULT TO ACHIEVE



SW PERSPECTIVE





# WEST FACADE





Feedback?



<https://forms.gle/UMUBPaQumEMZQ4pT8>

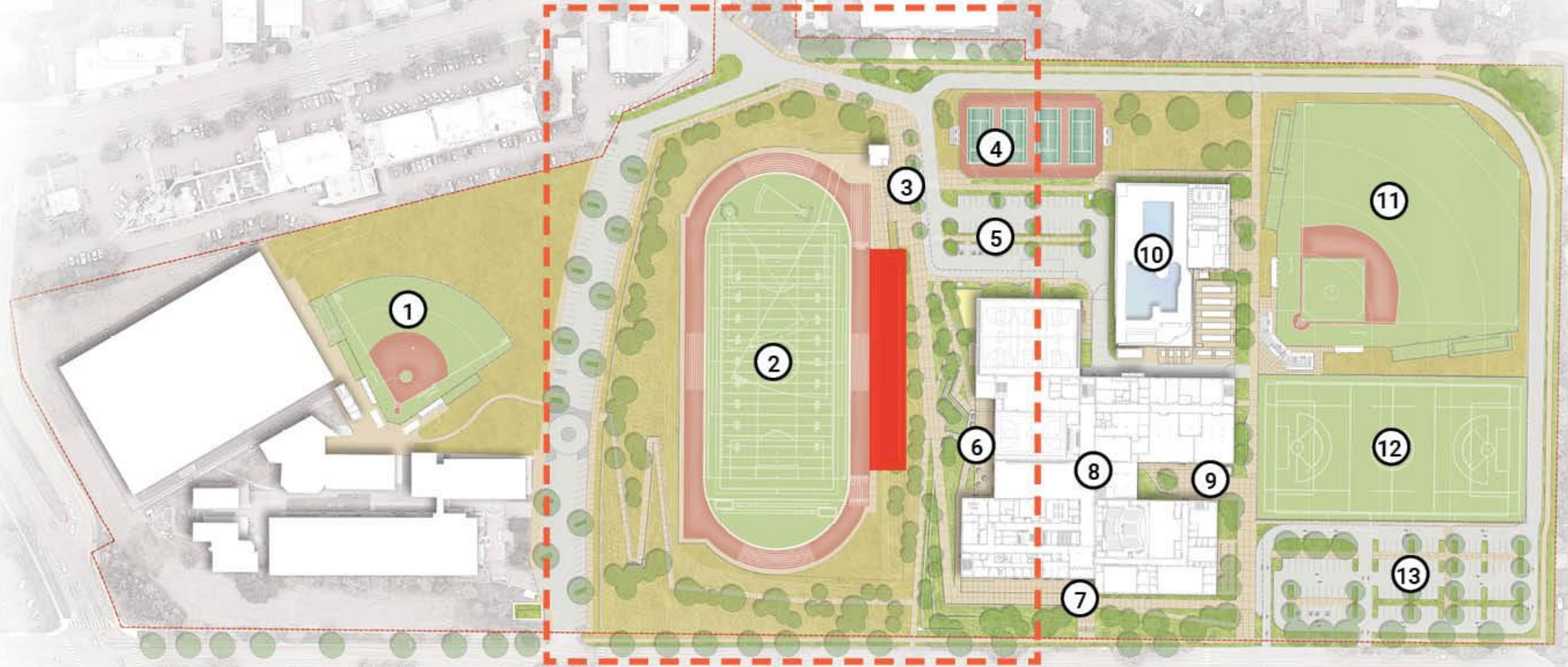


# Site Updates





# SITE PLAN



- ① SOFTBALL FIELD
- ② TRACK AND FIELD
- ③ PLAZA

- ④ TENNIS COURTS
- ⑤ PARKING
- ⑥ TERRACE

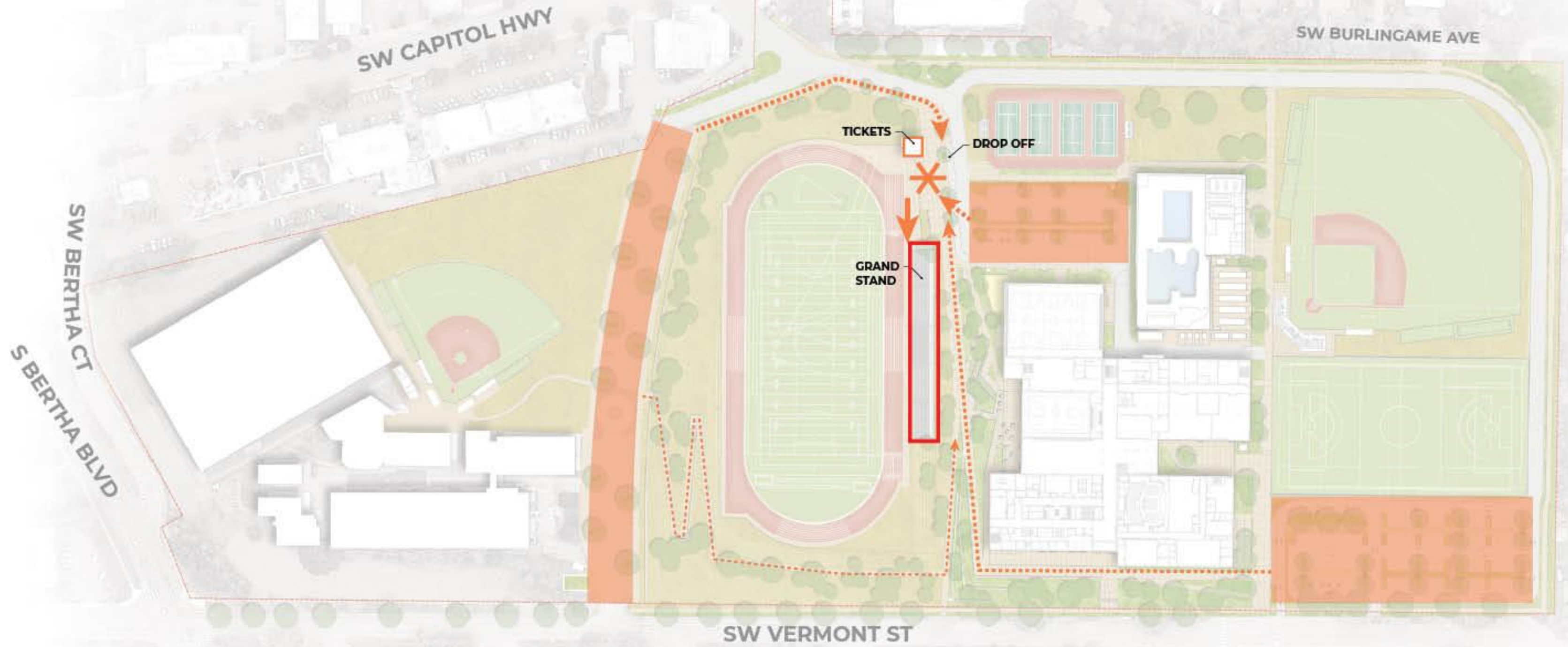
- ⑦ MAIN ENTRY
- ⑧ NEW BUILDING
- ⑨ COURTYARD

- ⑩ EXISTING POOL
- ⑪ BASEBALL FIELD
- ⑫ MULTI-USE FIELD

- ⑬ PARKING

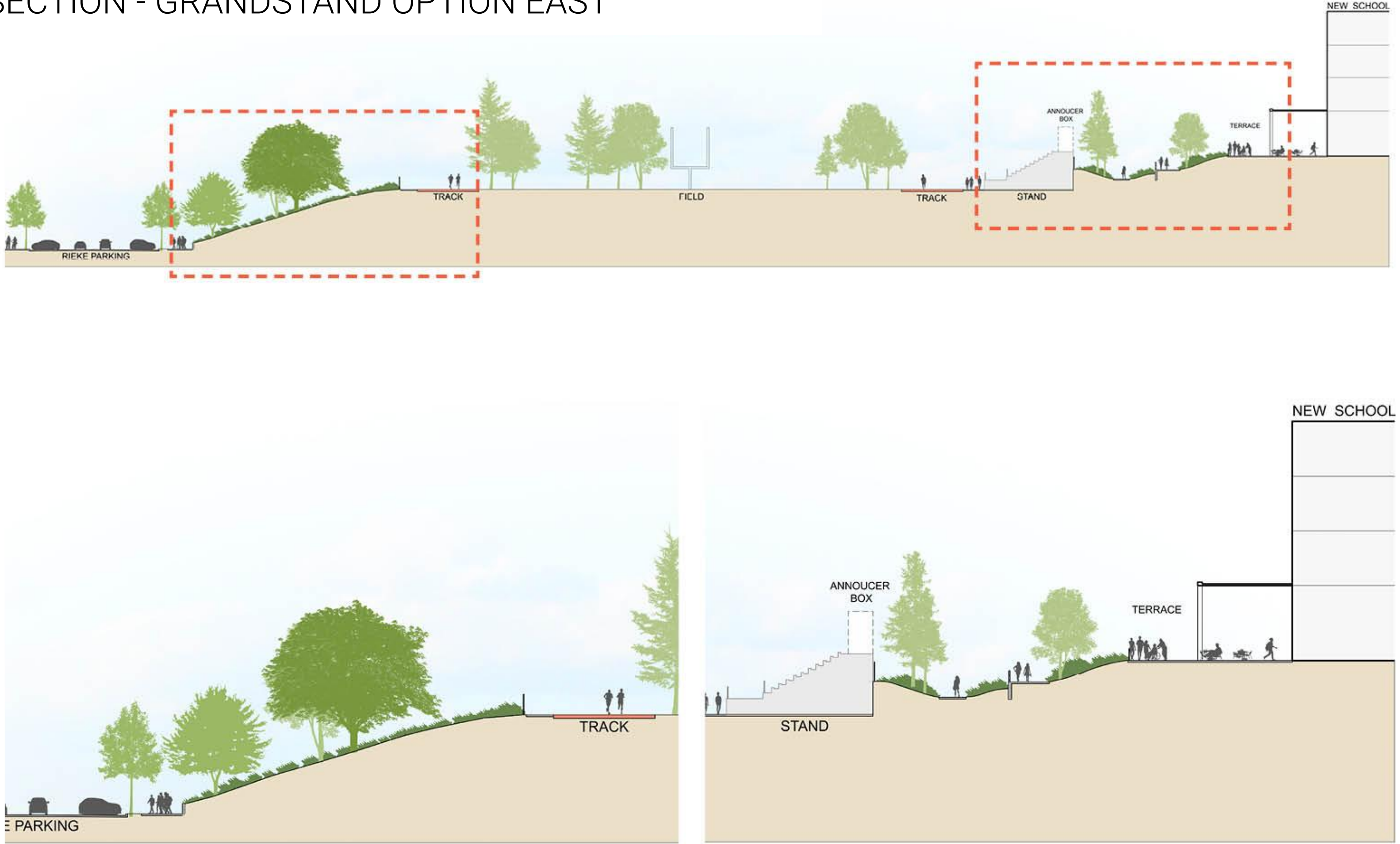


# APPROACH DIAGRAM - GRANDSTAND OPTION EAST



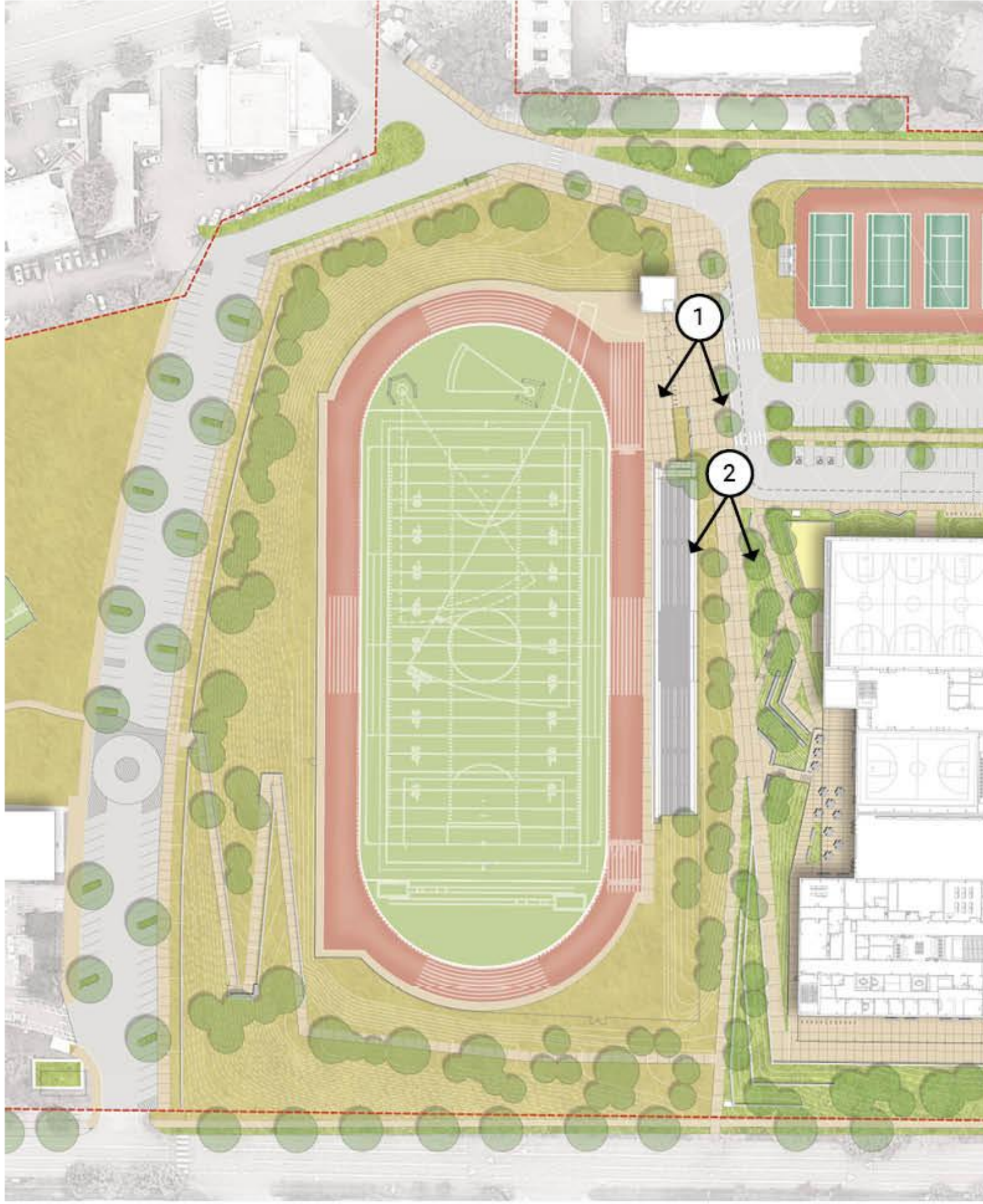


SITE SECTION - GRANDSTAND OPTION EAST



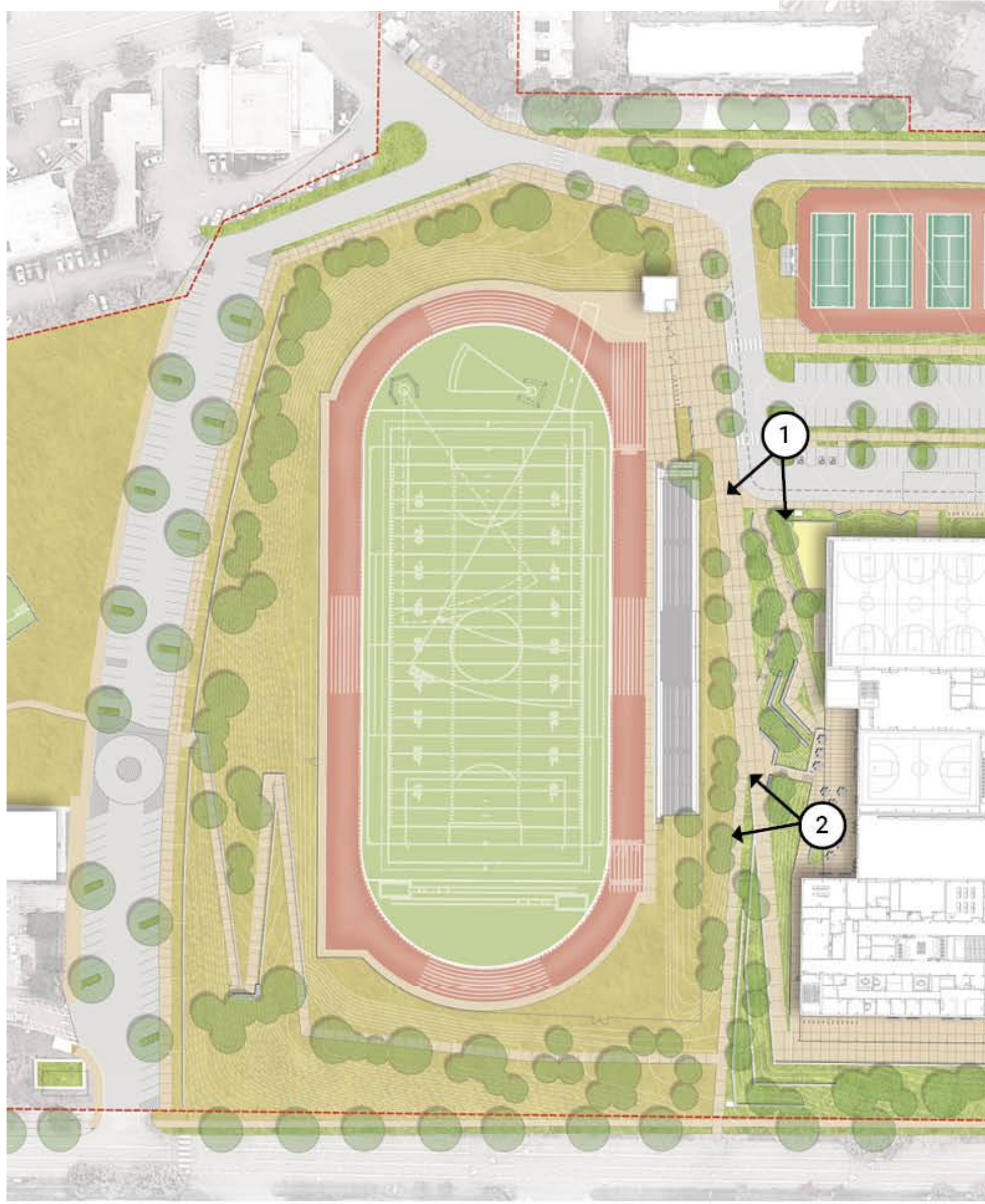


## VIEWS - GRANDSTAND OPTION EAST



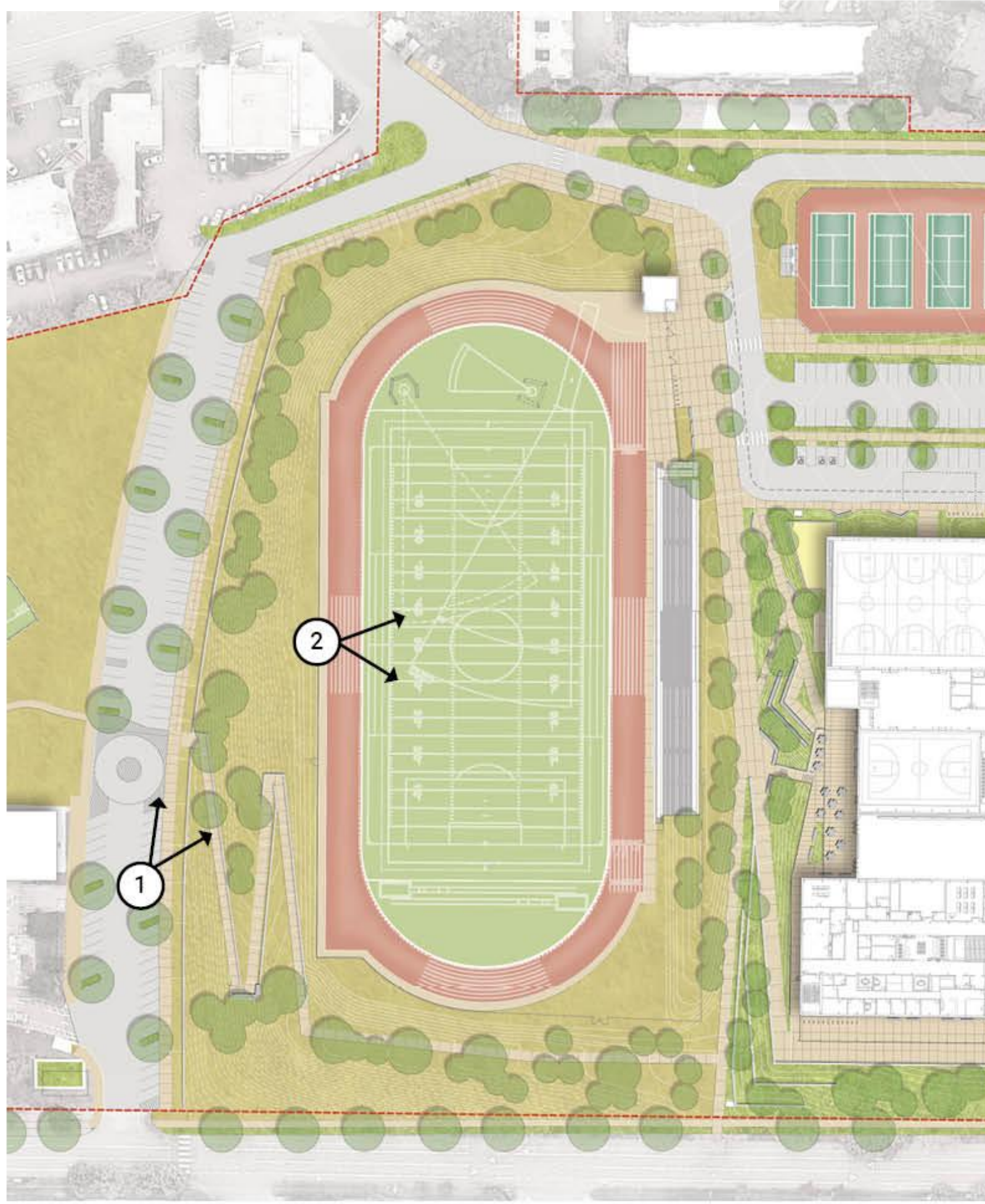


## VIEWS - GRANDSTAND OPTION EAST



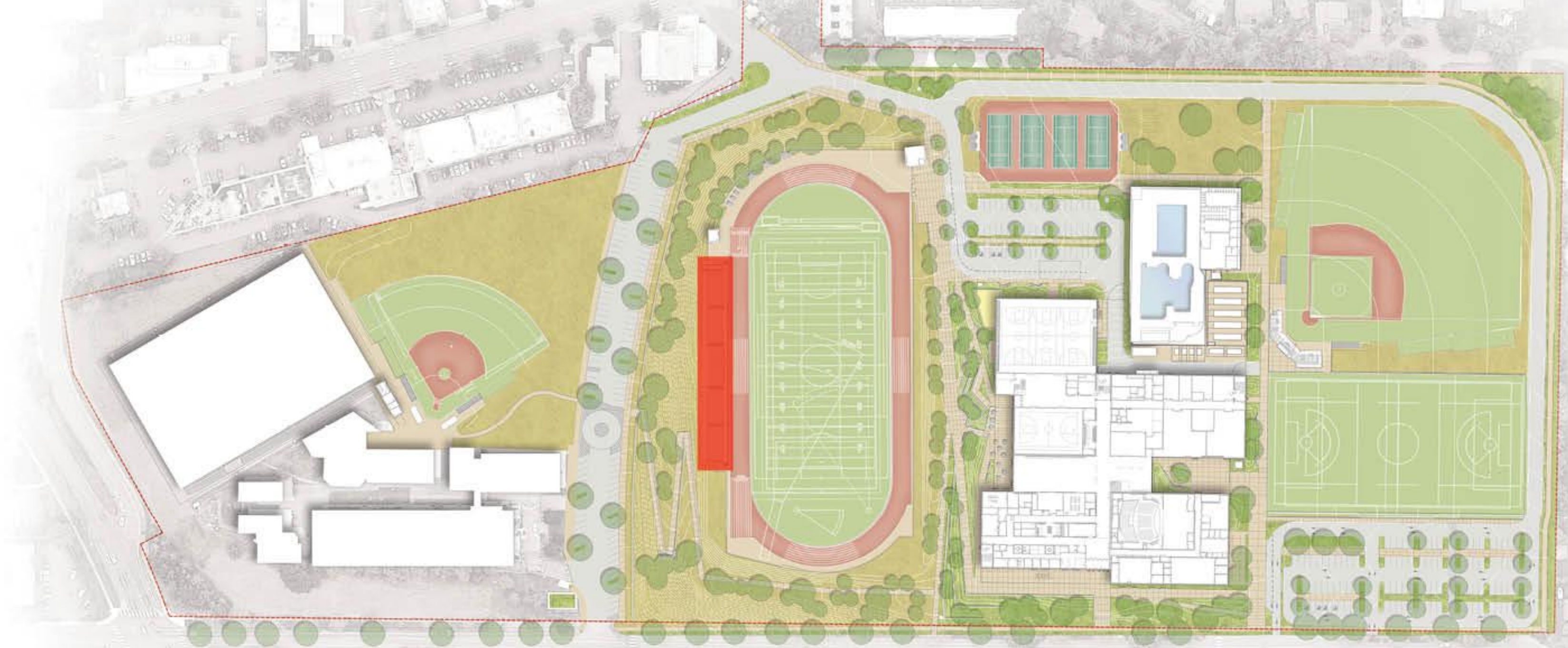


## VIEWS - GRANDSTAND OPTION EAST



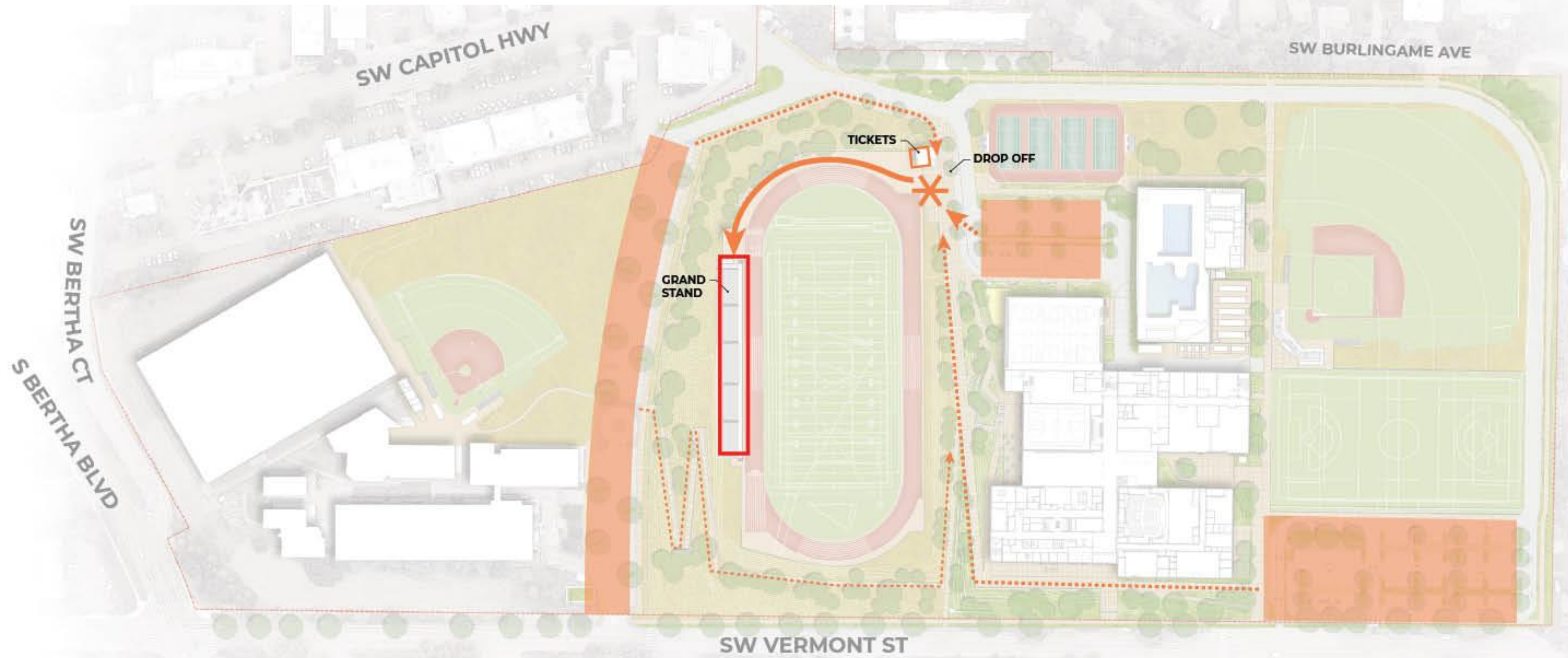


# OVERALL SITE PLAN - GRANDSTAND OPTION WEST



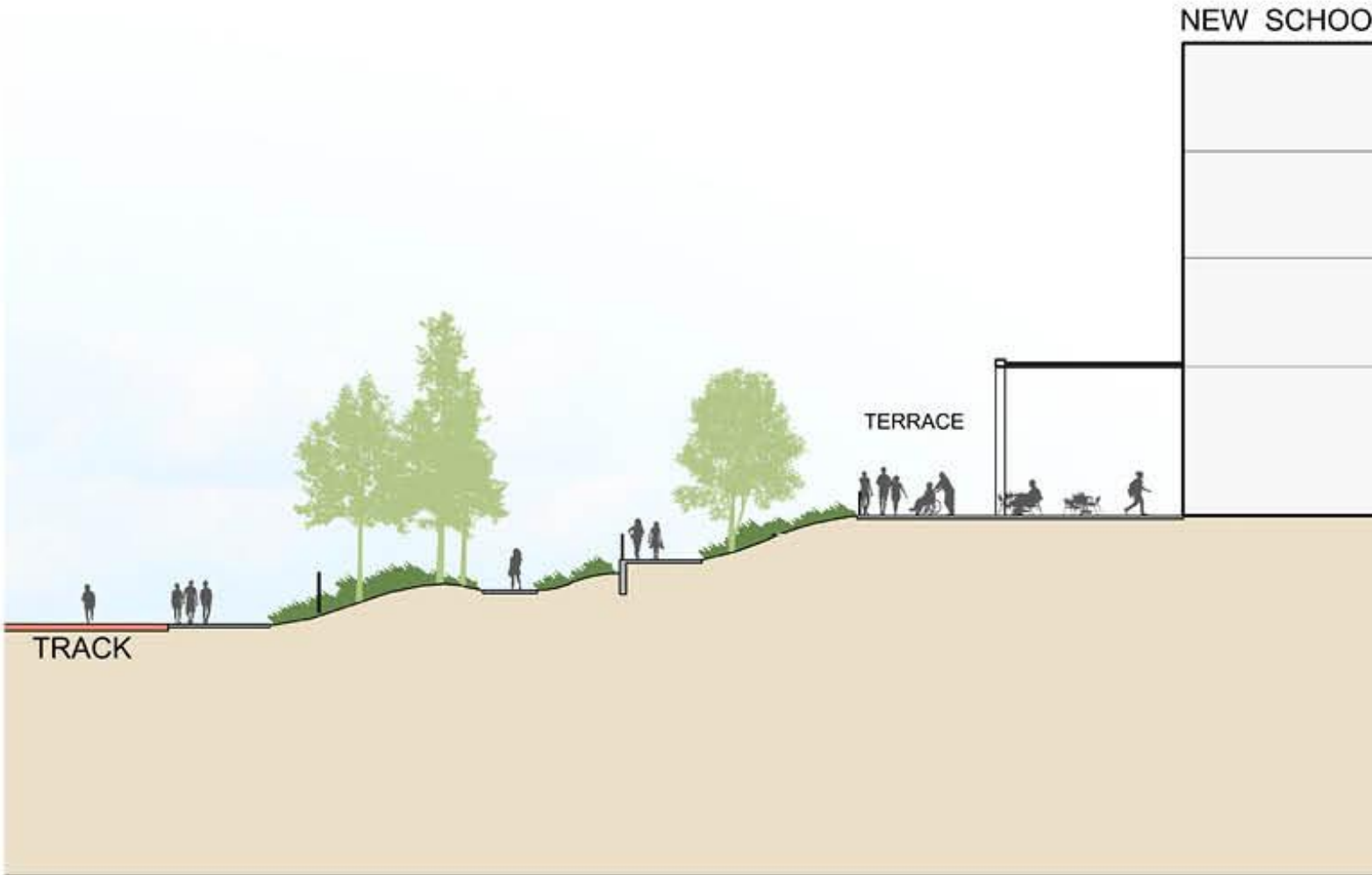
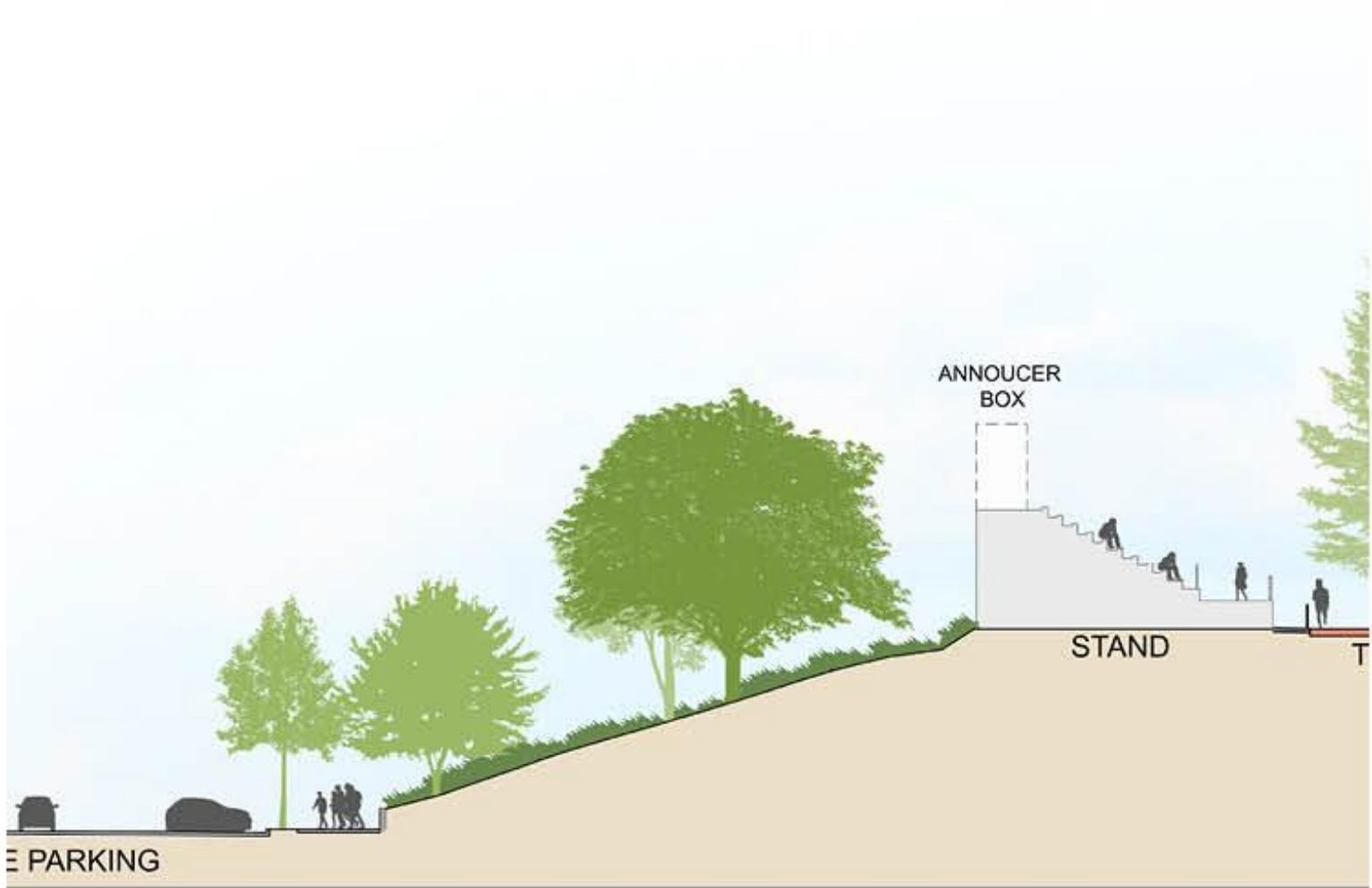
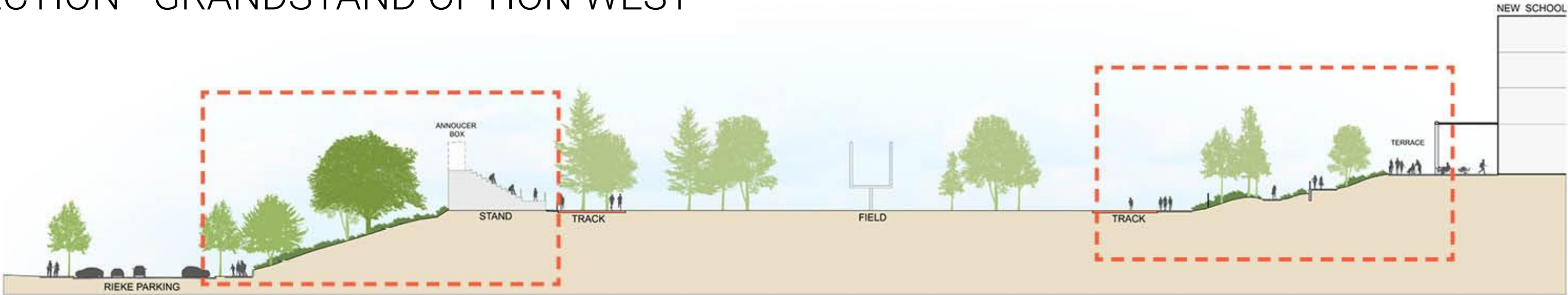


# APPROACH DIAGRAM - GRANDSTAND OPTION WEST



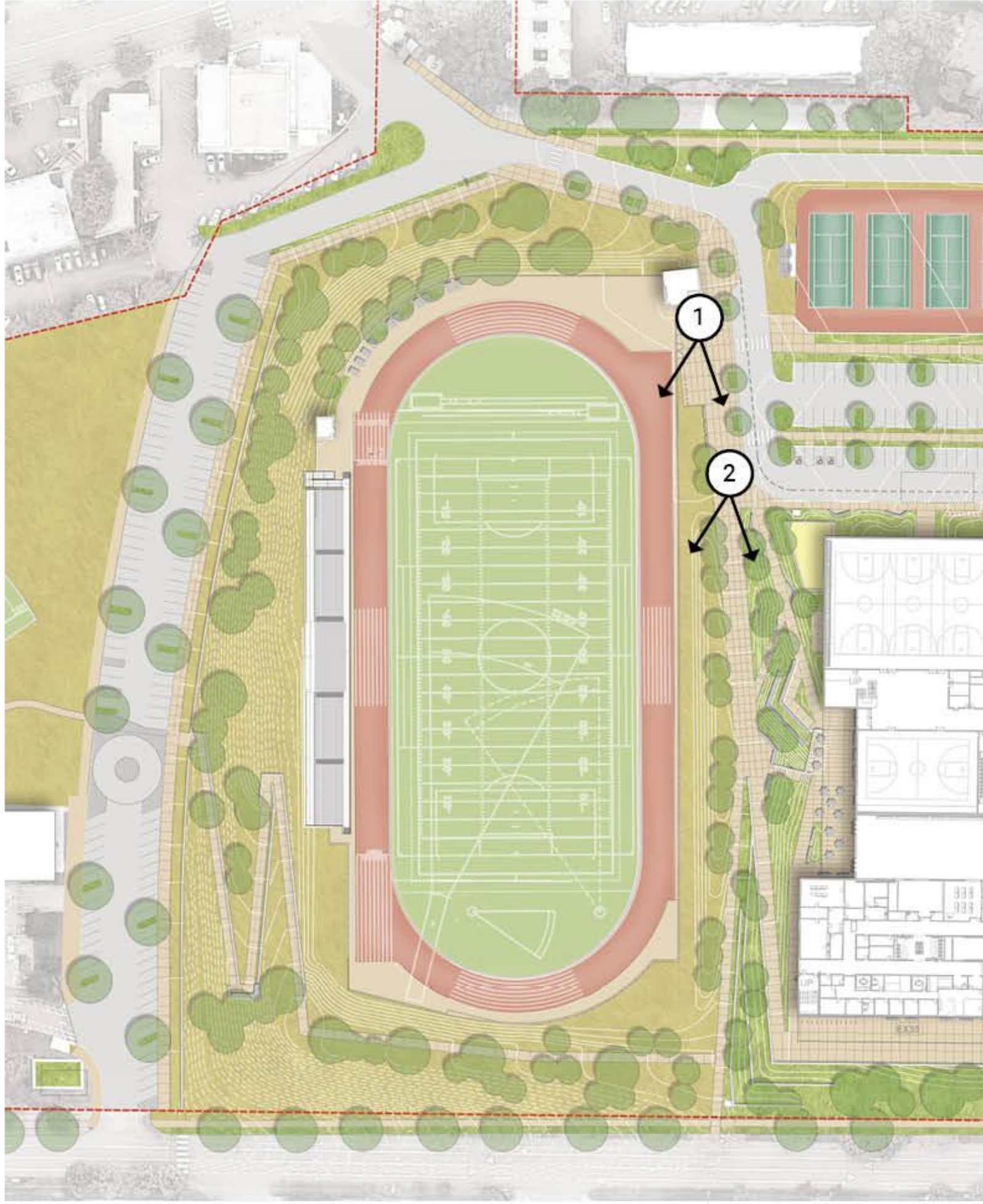


SITE SECTION - GRANDSTAND OPTION WEST



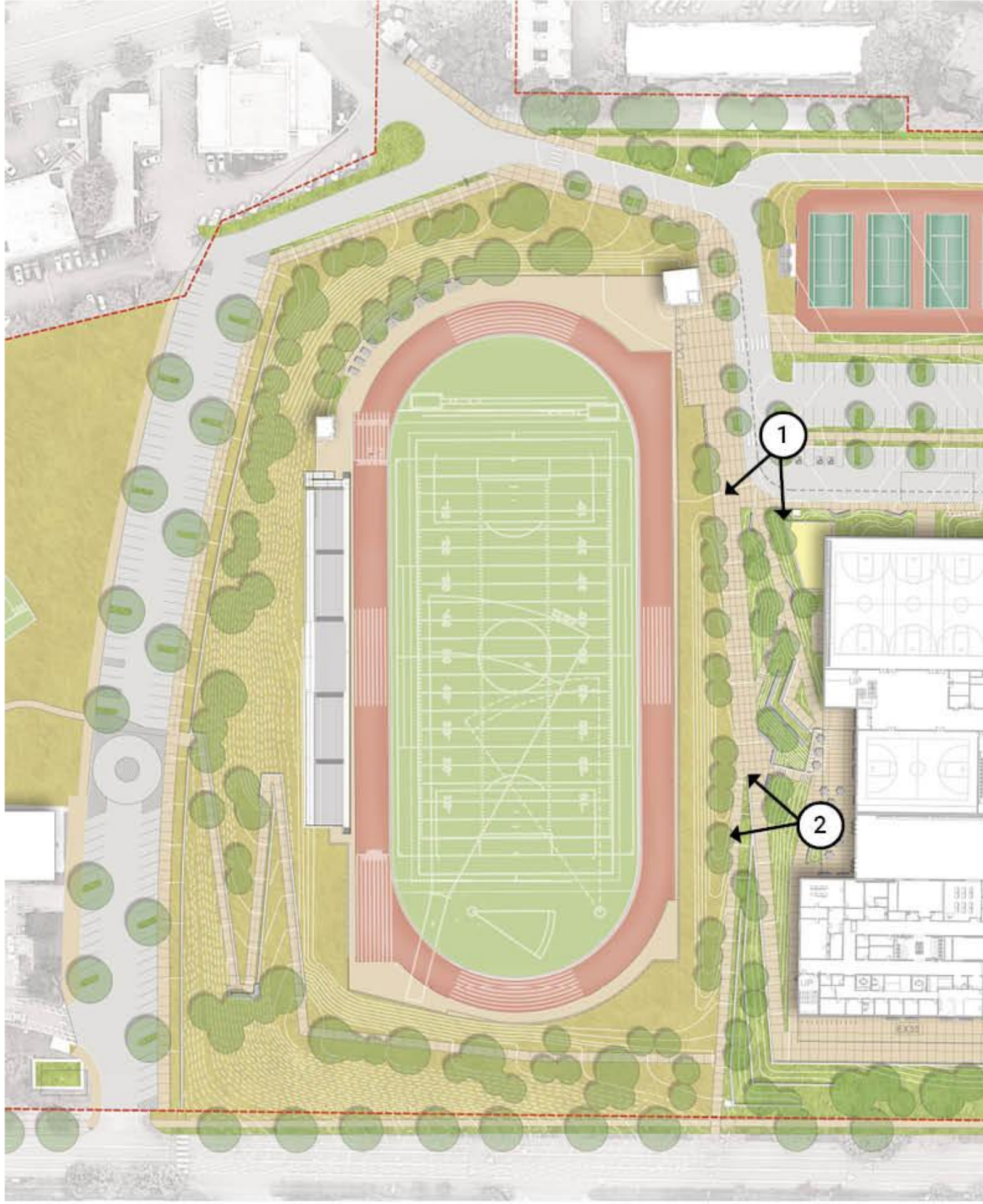


## VIEWS - GRANDSTAND OPTION WEST



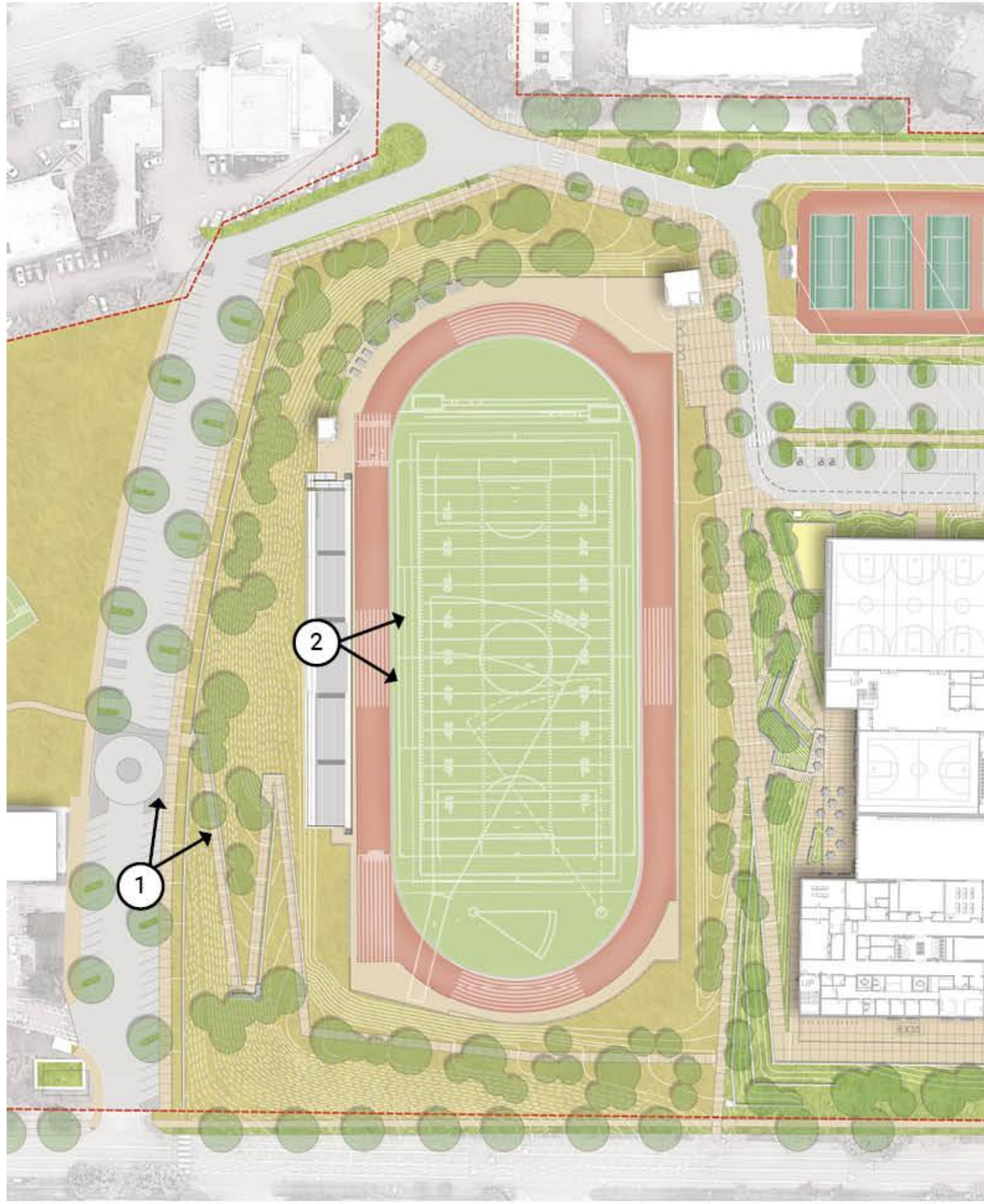


## VIEWS - GRANDSTAND OPTION WEST



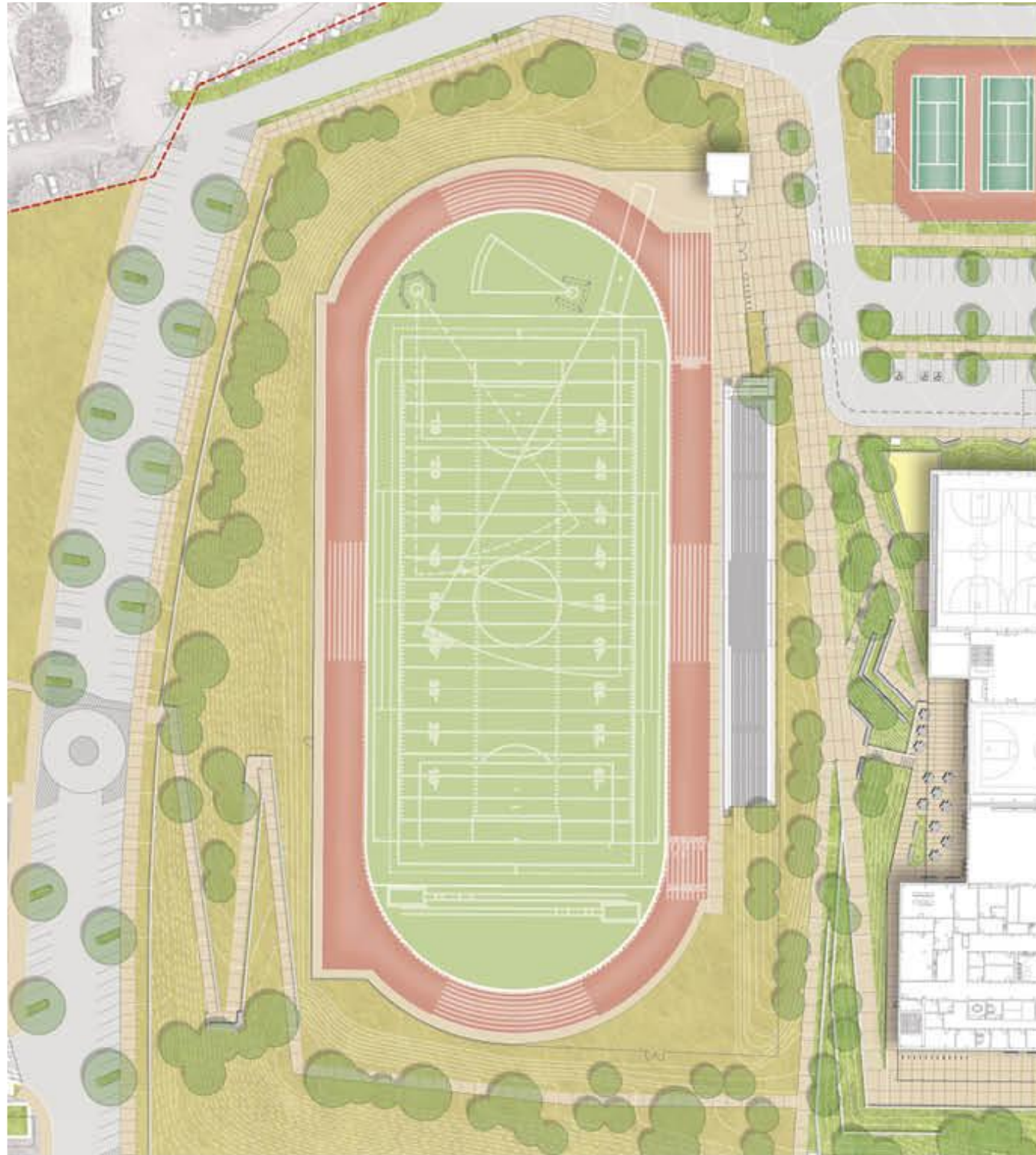


## VIEWS - GRANDSTAND OPTION WEST





# GRANDSTAND LOCATION OPTIONS PROS / CONS



## Option - East

### Pros

- Centralized
- Short walk
- Larger entry Plaza
- Geotechnical advantage

### Cons

- Impacted view between building and fields
- Sun impacts on spectators
- Shady area between new school building and stands



## Option - West

### Pros

- Open view to fields
- Gathering spaces along the path to the stands
- Not looking at the sun

### Cons

- Longer walk to stands
- Visual impact on Rieke
- Geotechnical challenges
- Smaller entry Plaza



Break!

Feedback?



<https://forms.gle/UMUBPaQumEMZQ4pT8>





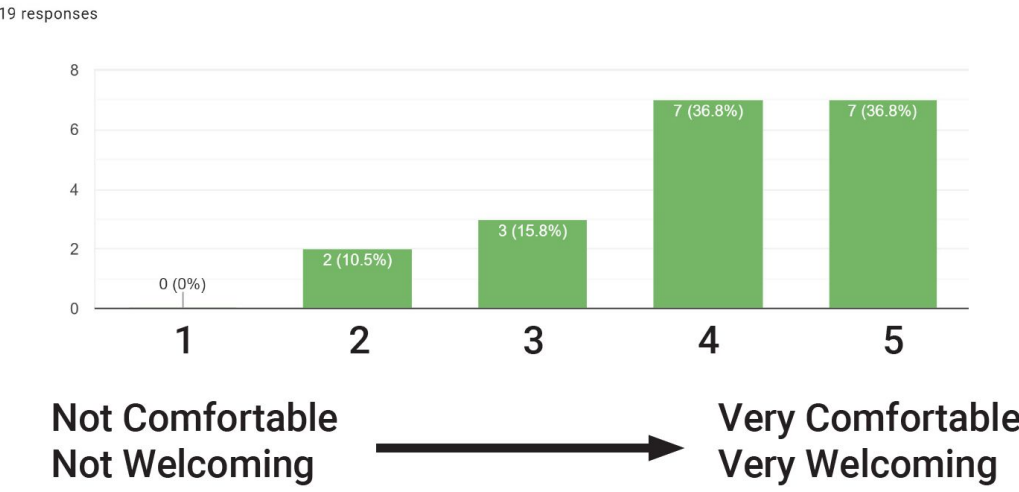
# Feedback Exercise





# FEEDBACK EXERCISE

“ This survey is organized into 6 sections, each of which includes a series of images that could represent spaces similar to those in the new IBW High School. Review the images and rank how you feel about them, ranging from "NOT comfortable / welcoming" to "VERY comfortable / welcoming", and then share a little about each ranking. All questions are optional. Thank you for your time!”





## NEXT STEPS

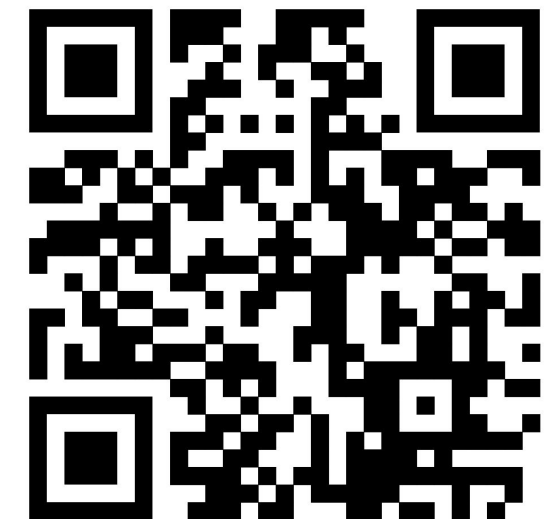
**CMGC Onboarding in September**

**Listening Session Recruitment** Ongoing

**DAG Meeting #4** September 18th

**Community Design Workshop** September 22nd

Feedback?



<https://forms.gle/UMUBPaQumEMZQ4pT8>



